



Nidogen rabbit pAb

Cat No.:ES6392

For research use only

Overview

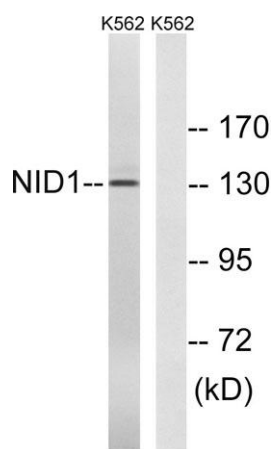
Product Name	Nidogen rabbit pAb
Host species	Rabbit
Applications	WB;ELISA
Species Cross-Reactivity	Human;Mouse;Rat
Recommended dilutions	Western Blot: 1/500 - 1/2000. ELISA: 1/20000. Not yet tested in other applications.
Immunogen	The antiserum was produced against synthesized peptide derived from human NID1. AA range:219-268
Specificity	Nidogen Polyclonal Antibody detects endogenous levels of Nidogen protein.
Formulation	Liquid in PBS containing 50% glycerol, 0.5% BSA and 0.02% sodium azide.
Storage	Store at -20°C. Avoid repeated freeze-thaw cycles.
Protein Name	Nidogen-1
Gene Name	NID1
Cellular localization	Secreted, extracellular space, extracellular matrix, basement membrane.
Purification	The antibody was affinity-purified from rabbit antiserum by affinity-chromatography using epitope-specific immunogen.
Clonality	Polyclonal
Concentration	1 mg/ml
Observed band	136kD
Human Gene ID	4811
Human Swiss-Prot Number	P14543
Alternative Names	NID1; NID; Nidogen-1; NID-1; Entactin
Background	nidogen 1(NID1) Homo sapiens This gene encodes a member of the nidogen family of basement membrane glycoproteins. The protein interacts with several other components of basement membranes, and may play a role in cell interactions with the extracellular matrix. [provided





ELK Biotechnology

by RefSeq, Jul 2008],



Western blot analysis of lysates from K562 cells, using NID1 Antibody. The lane on the right is blocked with the synthesized peptide.



+86-27-59760950

ELKbio@ELKbiotech.com

www.elkbiotech.com

23-2, No.388 Gaoxin 2nd Road,Wuhan East Lake Hi-tech Development Zone, Hubei , P.R.C