



MYBPC1 rabbit pAb

Cat No.:ES6301

For research use only

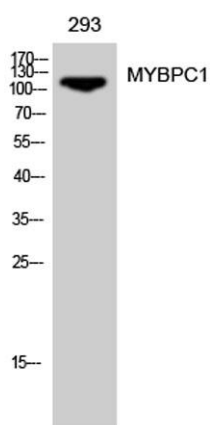
Overview

| | |
|---------------------------------|--|
| Product Name | MYBPC1 rabbit pAb |
| Host species | Rabbit |
| Applications | WB;ELISA;IHC |
| Species Cross-Reactivity | Human;Mouse;Rat |
| Recommended dilutions | WB 1:500-2000;IHC-p 1:50-300; ELISA 2000-20000 |
| Immunogen | The antiserum was produced against synthesized peptide derived from human MYBPC1. AA range:218-267 |
| Specificity | MYBPC1 Polyclonal Antibody detects endogenous levels of MYBPC1 protein. |
| Formulation | Liquid in PBS containing 50% glycerol, 0.5% BSA and 0.02% sodium azide. |
| Storage | Store at -20°C. Avoid repeated freeze-thaw cycles. |
| Protein Name | Myosin-binding protein C slow-type |
| Gene Name | MYBPC1 |
| Cellular localization | cytosol,myofibril,myosin filament, |
| Purification | The antibody was affinity-purified from rabbit antiserum by affinity-chromatography using epitope-specific immunogen. |
| Clonality | Polyclonal |
| Concentration | 1 mg/ml |
| Observed band | 120kD |
| Human Gene ID | 4604 |
| Human Swiss-Prot Number | Q00872 |
| Alternative Names | MYBPC1; MYBPCS; Myosin-binding protein C; slow-type; Slow MyBP-C; C-protein, skeletal muscle slow isoform |
| Background | This gene encodes a member of the myosin-binding protein C family. Myosin-binding protein C family members are myosin-associated proteins found in the cross-bridge-bearing zone (C region) of A bands in striated muscle. The encoded protein is the slow skeletal muscle isoform of myosin-binding protein C |

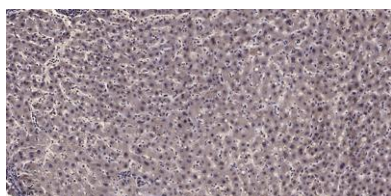




and plays an important role in muscle contraction by recruiting muscle-type creatine kinase to myosin filaments. Mutations in this gene are associated with distal arthrogryposis type I. Alternatively spliced transcript variants encoding multiple isoforms have been observed for this gene. [provided by RefSeq, Dec 2011],



Western Blot analysis of 293 cells using MYBPC1 Polyclonal Antibody diluted at 1:500



Immunohistochemical analysis of paraffin-embedded human liver cancer. 1, Antibody was diluted at 1:200(4° overnight). 2, Tris-EDTA,pH9.0 was used for antigen retrieval. 3,Secondary antibody was diluted at 1:200(room temperature, 45min).

