



Olfactory receptor 11L1 rabbit pAb

Cat No.:ES6079

For research use only

Overview

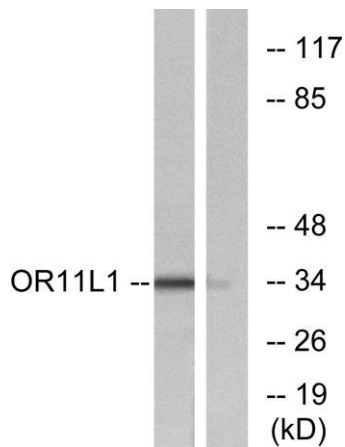
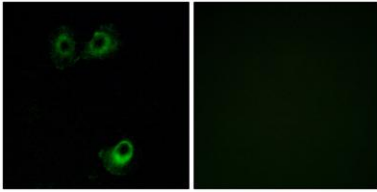
| | |
|---------------------------------|--|
| Product Name | Olfactory receptor 11L1 rabbit pAb |
| Host species | Rabbit |
| Applications | WB;IF;ELISA |
| Species Cross-Reactivity | Human;Rat;Mouse; |
| Recommended dilutions | Western Blot: 1/500 - 1/2000. Immunofluorescence: 1/200 - 1/1000. ELISA: 1/40000. Not yet tested in other applications. |
| Immunogen | The antiserum was produced against synthesized peptide derived from human OR11L1. AA range:201-250 |
| Specificity | Olfactory receptor 11L1 Polyclonal Antibody detects endogenous levels of Olfactory receptor 11L1 protein. |
| Formulation | Liquid in PBS containing 50% glycerol, 0.5% BSA and 0.02% sodium azide. |
| Storage | Store at -20°C. Avoid repeated freeze-thaw cycles. |
| Protein Name | Olfactory receptor 11L1 |
| Gene Name | OR11L1 |
| Cellular localization | Cell membrane; Multi-pass membrane protein. |
| Purification | The antibody was affinity-purified from rabbit antiserum by affinity-chromatography using epitope-specific immunogen. |
| Clonality | Polyclonal |
| Concentration | 1 mg/ml |
| Observed band | 34kD |
| Human Gene ID | 391189 |
| Human Swiss-Prot Number | Q8NGX0 |
| Alternative Names | OR11L1; Olfactory receptor 11L1 |
| Background | Olfactory receptors interact with odorant molecules in the nose, to initiate a neuronal response that triggers the perception of a smell. The olfactory receptor proteins are members of a large family of G-protein-coupled receptors (GPCR) arising from |





single coding-exon genes. Olfactory receptors share a 7-transmembrane domain structure with many neurotransmitter and hormone receptors and are responsible for the recognition and G protein-mediated transduction of odorant signals. The olfactory receptor gene family is the largest in the genome. The nomenclature assigned to the olfactory receptor genes and proteins for this organism is independent of other organisms. [provided by RefSeq, Jul 2008],

Immunofluorescence analysis of A549 cells, using OR11L1 Antibody. The picture on the right is blocked with the synthesized peptide.

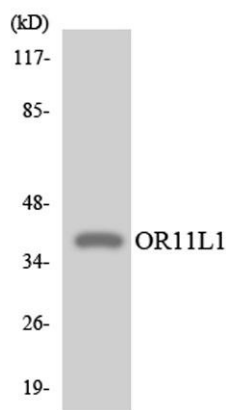


Western blot analysis of lysates from LOVO cells, using OR11L1 Antibody. The lane on the right is blocked with the synthesized peptide.





ELK Biotechnology



Western blot analysis of the lysates from COLO205 cells using OR11L1 antibody.



+86-27-59760950

ELKbio@ELKbiotech.com

www.elkbiotech.com

23-2, No.388 Gaoxin 2nd Road,Wuhan East Lake Hi-tech Development Zone, Hubei , P.R.C