



KIR2.3 rabbit pAb

Cat No.:ES6006

For research use only

Overview

Product Name	KIR2.3 rabbit pAb
Host species	Rabbit
Applications	WB;ELISA;IHC
Species Cross-Reactivity	Human;Mouse;Rat
Recommended dilutions	WB 1:500-2000;IHC-p 1:50-300; ELISA 2000-20000
Immunogen	The antiserum was produced against synthesized peptide derived from human KCNJ4. AA range:251-300
Specificity	KIR2.3 Polyclonal Antibody detects endogenous levels of KIR2.3 protein.
Formulation	Liquid in PBS containing 50% glycerol, 0.5% BSA and 0.02% sodium azide.
Storage	Store at -20°C. Avoid repeated freeze-thaw cycles.
Protein Name	Inward rectifier potassium channel 4
Gene Name	KCNJ4
Cellular localization	Cell membrane; Multi-pass membrane protein. Cell junction, synapse, postsynaptic cell membrane ; Multi-pass membrane protein . Cytoplasmic vesicle membrane . TAX1BP3 binding promotes dissociation of KCNJ4 from LIN7 family members and KCNJ4 internalization
Purification	The antibody was affinity-purified from rabbit antiserum by affinity-chromatography using epitope-specific immunogen.
Clonality	Polyclonal
Concentration	1 mg/ml
Observed band	50kD
Human Gene ID	3761
Human Swiss-Prot Number	P48050
Alternative Names	KCNJ4; IRK3; Inward rectifier potassium channel 4; HIRK2; HRK1; Hippocampal inward rectifier; HIR; Inward rectifier K(+) channel Kir2.3; IRK-3; Potassium channel; inwardly rectifying subfamily J



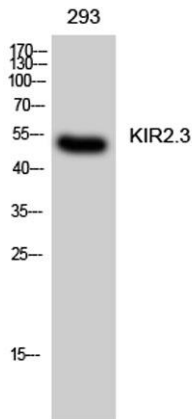


Background

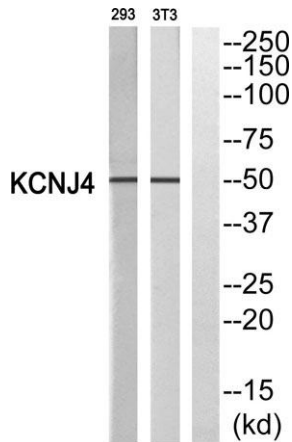
member 4

Several different potassium channels are known to be involved with electrical signaling in the nervous system. One class is activated by depolarization whereas a second class is not. The latter are referred to as inwardly rectifying K⁺ channels, and they have a greater tendency to allow potassium to flow into the cell rather than out of it. This asymmetry in potassium ion conductance plays a key role in the excitability of muscle cells and neurons. The protein encoded by this gene is an integral membrane protein and member of the inward rectifier potassium channel family. The encoded protein has a small unitary conductance compared to other members of this protein family. Two transcript variants encoding the same protein have been found for this gene. [provided by RefSeq, Jul 2008],

Western Blot analysis of 293 cells using KIR2.3 Polyclonal Antibody

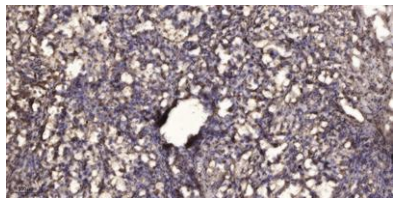


Western blot analysis of KCNJ4 Antibody. The lane on the right is blocked with the KCNJ4 peptide.





ELK Biotechnology



Immunohistochemical analysis of paraffin-embedded human Squamous cell carcinoma of lung. 1, Antibody was diluted at 1:200(4° overnight). 2, Tris-EDTA,pH9.0 was used for antigen retrieval. 3,Secondary antibody was diluted at 1:200(room temperature, 45min).



+86-27-59760950

ELKbio@ELKbiotech.com

www.elkbiotech.com

23-2, No.388 Gaoxin 2nd Road,Wuhan East Lake Hi-tech Development Zone, Hubei , P.R.C