



# ICAM-2 rabbit pAb

Cat No.:ES5808

For research use only

## Overview

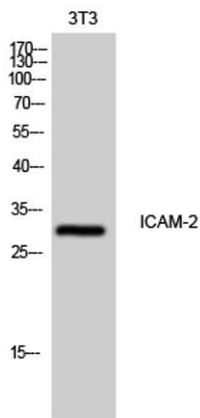
<b>Product Name</b>	ICAM-2 rabbit pAb
<b>Host species</b>	Rabbit
<b>Applications</b>	WB;ELISA
<b>Species Cross-Reactivity</b>	Human;Rat;Mouse;
<b>Recommended dilutions</b>	Western Blot: 1/500 - 1/2000. ELISA: 1/10000. Not yet tested in other applications.
<b>Immunogen</b>	The antiserum was produced against synthesized peptide derived from human ICAM2. AA range:151-200
<b>Specificity</b>	ICAM-2 Polyclonal Antibody detects endogenous levels of ICAM-2 protein.
<b>Formulation</b>	Liquid in PBS containing 50% glycerol, 0.5% BSA and 0.02% sodium azide.
<b>Storage</b>	Store at -20°C. Avoid repeated freeze-thaw cycles.
<b>Protein Name</b>	Intercellular adhesion molecule 2
<b>Gene Name</b>	ICAM2
<b>Cellular localization</b>	Membrane ; Single-pass type I membrane protein . Cell projection, microvillus . Co-localizes with RDX, EZR and MSN in microvilli. .
<b>Purification</b>	The antibody was affinity-purified from rabbit antiserum by affinity-chromatography using epitope-specific immunogen.
<b>Clonality</b>	Polyclonal
<b>Concentration</b>	1 mg/ml
<b>Observed band</b>	30kD
<b>Human Gene ID</b>	3384
<b>Human Swiss-Prot Number</b>	P13598
<b>Alternative Names</b>	ICAM2; Intercellular adhesion molecule 2; ICAM-2; CD antigen CD102
<b>Background</b>	The protein encoded by this gene is a member of the intercellular adhesion molecule (ICAM) family. All ICAM proteins are type I transmembrane glycoproteins, contain 2-9 immunoglobulin-like





C2-type domains, and bind to the leukocyte adhesion LFA-1 protein. This protein may play a role in lymphocyte recirculation by blocking LFA-1-dependent cell adhesion. It mediates adhesive interactions important for antigen-specific immune response, NK-cell mediated clearance, lymphocyte recirculation, and other cellular interactions important for immune response and surveillance. Several transcript variants encoding the same protein have been found for this gene. [provided by RefSeq, Jul 2008],

Western Blot analysis of 3T3 cells using ICAM-2 Polyclonal Antibody



Western blot analysis of the lysates from HT-29 cells using ICAM2 antibody.

