



HoxD10 rabbit pAb

Cat No.:ES5767

For research use only

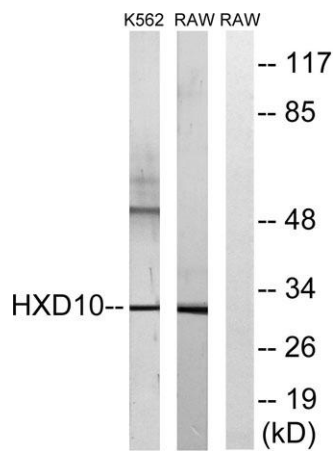
Overview

Product Name	HoxD10 rabbit pAb
Host species	Rabbit
Applications	WB;ELISA
Species Cross-Reactivity	Human;Mouse
Recommended dilutions	Western Blot: 1/500 - 1/2000. ELISA: 1/40000. Not yet tested in other applications.
Immunogen	The antiserum was produced against synthesized peptide derived from human HOXD10. AA range:291-340
Specificity	HoxD10 Polyclonal Antibody detects endogenous levels of HoxD10 protein.
Formulation	Liquid in PBS containing 50% glycerol, 0.5% BSA and 0.02% sodium azide.
Storage	Store at -20°C. Avoid repeated freeze-thaw cycles.
Protein Name	Homeobox protein Hox-D10
Gene Name	HOXD10
Cellular localization	Nucleus.
Purification	The antibody was affinity-purified from rabbit antiserum by affinity-chromatography using epitope-specific immunogen.
Clonality	Polyclonal
Concentration	1 mg/ml
Observed band	32kD
Human Gene ID	3236
Human Swiss-Prot Number	P28358
Alternative Names	HOXD10; HOX4D; HOX4E; Homeobox protein Hox-D10; Homeobox protein Hox-4D; Homeobox protein Hox-4E
Background	This gene is a member of the Abd-B homeobox family and encodes a protein with a homeobox DNA-binding domain. It is included in a cluster of homeobox D genes located on chromosome 2. The encoded nuclear protein functions as a





sequence-specific transcription factor that is expressed in the developing limb buds and is involved in differentiation and limb development. Mutations in this gene have been associated with Wilm's tumor and congenital vertical talus (also known as "rocker-bottom foot" deformity or congenital convex pes valgus) and/or a foot deformity resembling that seen in Charcot-Marie-Tooth disease. [provided by RefSeq, Jul 2008],



Western blot analysis of lysates from K562 and RAW264.7 cells, using HOXD10 Antibody. The lane on the right is blocked with the synthesized peptide.

