

GCS- β -2 rabbit pAb

Cat No.:ES5691

For research use only

Overview

Product Name	GCS- β -2 rabbit pAb
Host species	Rabbit
Applications	IHC;IF;ELISA
Species Cross-Reactivity	Human;Mouse;Rat
Recommended dilutions	Immunohistochemistry: 1/100 - 1/300. ELISA: 1/10000. Not yet tested in other applications.
Immunogen	The antiserum was produced against synthesized peptide derived from human GCS-beta-2. AA range:53-102
Specificity	GCS- β -2 Polyclonal Antibody detects endogenous levels of GCS- β -2 protein.
Formulation	Liquid in PBS containing 50% glycerol, 0.5% BSA and 0.02% sodium azide.
Storage	Store at -20°C. Avoid repeated freeze-thaw cycles.
Protein Name	Guanylate cyclase soluble subunit beta-2
Gene Name	GUCY1B2
Cellular localization	Cytoplasm.
Purification	The antibody was affinity-purified from rabbit antiserum by affinity-chromatography using epitope-specific immunogen.
Clonality	Polyclonal
Concentration	1 mg/ml
Observed band	70kD
Human Gene ID	2974
Human Swiss-Prot Number	O75343
Alternative Names	GUCY1B2; Guanylate cyclase soluble subunit beta-2; GCS-beta-2
Background	Nitric oxide-sensitive guanylyl cyclase is a heterodimeric enzyme consisting of an alpha and a beta subunit. The enzyme converts GTP into the second messenger cGMP and plays a major role in the cardiovascular system as a receptor for nitric oxide. Unlike other guanylyl cyclases, GUCY1B2

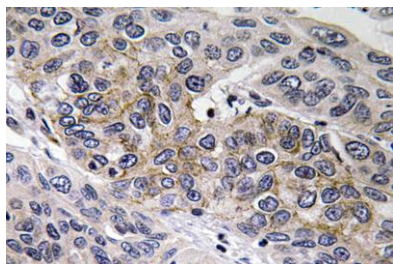




ELK Biotechnology

contains an 86-amino acid C-terminal extension with a consensus sequence for isoprenylation/carboxymethylation.

Immunohistochemistry analysis of GCS- β -2 antibody in paraffin-embedded human lung carcinoma tissue.



+86-27-59760950

ELKbio@ELKbiotech.com

www.elkbiotech.com

23-2, No.388 Gaoxin 2nd Road, Wuhan East Lake Hi-tech Development Zone, Hubei, P.R.C.