

# MRP-S32 rabbit pAb

Cat No.:ES5644

For research use only

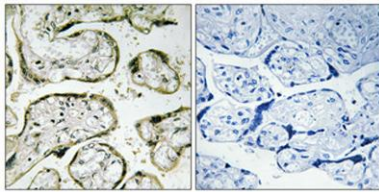
## Overview

Product Name	MRP-S32 rabbit pAb
Host species	Rabbit
Applications	IHC;IF;ELISA
Species Cross-Reactivity	Human;Rat;Mouse;
Recommended dilutions	Immunohistochemistry: 1/100 - 1/300. ELISA: 1/40000. Not yet tested in other applications.
Immunogen	The antiserum was produced against synthesized peptide derived from human MRPS42. AA range:75-124
Specificity	MRP-S32 Polyclonal Antibody detects endogenous levels of MRP-S32 protein.
Formulation	Liquid in PBS containing 50% glycerol, 0.5% BSA and 0.02% sodium azide.
Storage	Store at -20°C. Avoid repeated freeze-thaw cycles.
Protein Name	39S ribosomal protein L42 mitochondrial
Gene Name	MRPL42
Cellular localization	Mitochondrion .
Purification	The antibody was affinity-purified from rabbit antiserum by affinity-chromatography using epitope-specific immunogen.
Clonality	Polyclonal
Concentration	1 mg/ml
Observed band	
Human Gene ID	28977
Human Swiss-Prot Number	Q9Y6G3
Alternative Names	MRPL42; MRPL31; MRPS32; RPML31; HSPC204; PTD007; 39S ribosomal protein L42; mitochondrial; L42mt; MRP-L42; 28S ribosomal protein S32, mitochondrial; MRP-S32; S32mt; 39S ribosomal protein L31, mitochondrial; L31mt; MRP-L31
Background	Mammalian mitochondrial ribosomal proteins are encoded by nuclear genes and help in protein



synthesis within the mitochondrion. Mitochondrial ribosomes (mitoribosomes) consist of a small 28S subunit and a large 39S subunit. They have an estimated 75% protein to rRNA composition compared to prokaryotic ribosomes, where this ratio is reversed. Another difference between mammalian mitoribosomes and prokaryotic ribosomes is that the latter contain a 5S rRNA. Among different species, the proteins comprising the mitoribosome differ greatly in sequence, and sometimes in biochemical properties, which prevents easy recognition by sequence homology. This gene encodes a protein identified as belonging to both the 28S and the 39S subunits. Alternative splicing results in multiple transcript variants. Pseudogenes corresponding to this gene are found on chromosomes 4q, 6p, 6q, 7p, and 15q. [provid

Immunohistochemical analysis of paraffin-embedded Human placenta. Antibody was diluted at 1:100(4° overnight). High-pressure and temperature Tris-EDTA,pH8.0 was used for antigen retrieval. Negative contrl (right) obtained from antibody was pre-absorbed b



Immunohistochemistry analysis of paraffin-embedded human placenta, using MRPS32 Antibody. The picture on the right is blocked with the synthesized peptide.

