

# Olfactory receptor 8G2 rabbit pAb

Cat No.:ES5496

For research use only

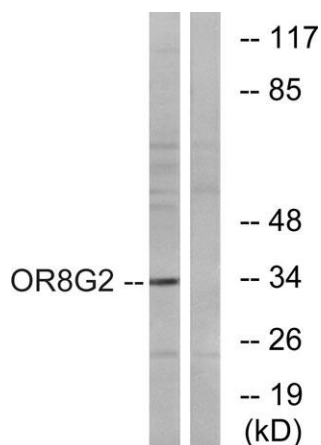
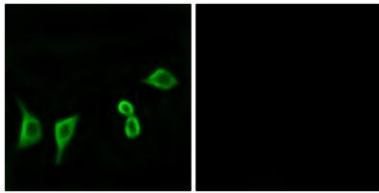
## Overview

Product Name	Olfactory receptor 8G2 rabbit pAb
Host species	Rabbit
Applications	WB;IF;ELISA
Species Cross-Reactivity	Human;Rat;Mouse;
Recommended dilutions	Western Blot: 1/500 - 1/2000. Immunofluorescence: 1/200 - 1/1000. ELISA: 1/10000. Not yet tested in other applications.
Immunogen	The antiserum was produced against synthesized peptide derived from human OR8G2. AA range:237-286
Specificity	Olfactory receptor 8G2 Polyclonal Antibody detects endogenous levels of Olfactory receptor 8G2 protein.
Formulation	Liquid in PBS containing 50% glycerol, 0.5% BSA and 0.02% sodium azide.
Storage	Store at -20°C. Avoid repeated freeze-thaw cycles.
Protein Name	Olfactory receptor 8G2
Gene Name	OR8G2
Cellular localization	plasma membrane,integral component of membrane,
Purification	The antibody was affinity-purified from rabbit antiserum by affinity-chromatography using epitope-specific immunogen.
Clonality	Polyclonal
Concentration	1 mg/ml
Observed band	33kD
Human Gene ID	26492
Human Swiss-Prot Number	Q15614
Alternative Names	OR8G2; OR8G2P; OR8G4; Olfactory receptor 8G2; Olfactory receptor 8G4; Olfactory receptor OR11-297; Olfactory receptor TPCR120
Background	olfactory receptor family 8 subfamily G member 2(OR8G2) Homo sapiens Olfactory receptors



interact with odorant molecules in the nose, to initiate a neuronal response that triggers the perception of a smell. The olfactory receptor proteins are members of a large family of G-protein-coupled receptors (GPCR) arising from single coding-exon genes. Olfactory receptors share a 7-transmembrane domain structure with many neurotransmitter and hormone receptors and are responsible for the recognition and G protein-mediated transduction of odorant signals. The olfactory receptor gene family is the largest in the genome. The nomenclature assigned to the olfactory receptor genes and proteins for this organism is independent of other organisms. [provided by RefSeq, Jul 2008],

Immunofluorescence analysis of LOVO cells, using OR8G2 Antibody. The picture on the right is blocked with the synthesized peptide.



Western blot analysis of lysates from HT-29 cells, using OR8G2 Antibody. The lane on the right is blocked with the synthesized peptide.

