

Ferritin heavy chain rabbit pAb

Cat No.:ES5400

For research use only

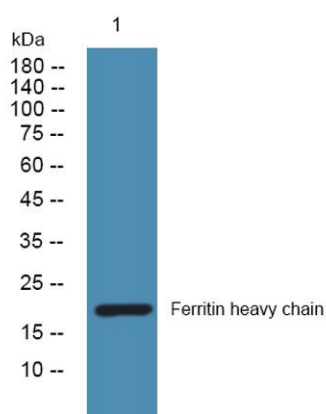
Overview

Product Name	Ferritin heavy chain rabbit pAb
Host species	Rabbit
Applications	WB;ELISA
Species Cross-Reactivity	Human;Mouse;Rat
Recommended dilutions	Western Blot: 1/500 - 1/2000. ELISA: 1/20000. Not yet tested in other applications.
Immunogen	Synthesized peptide derived from the Internal region of human Ferritin heavy chain.
Specificity	Ferritin heavy chain Polyclonal Antibody detects endogenous levels of Ferritin heavy chain protein.
Formulation	Liquid in PBS containing 50% glycerol, 0.5% BSA and 0.02% sodium azide.
Storage	Store at -20°C. Avoid repeated freeze-thaw cycles.
Protein Name	Ferritin heavy chain
Gene Name	FTH1
Cellular localization	cell,nucleus,cytoplasm,mitochondrion,cytosol,intracellular ferritin complex,integral component of membrane,autolysosome,extracellular exosome,
Purification	The antibody was affinity-purified from rabbit antiserum by affinity-chromatography using epitope-specific immunogen.
Clonality	Polyclonal
Concentration	1 mg/ml
Observed band	21kD
Human Gene ID	2495
Human Swiss-Prot Number	P02794
Alternative Names	FTH1; FTH; FTHL6; OK/SW-cl.84; PIG15; Ferritin heavy chain; Ferritin H subunit; Cell proliferation-inducing gene 15 protein
Background	This gene encodes the heavy subunit of ferritin, the major intracellular iron storage protein in prokaryotes and eukaryotes. It is composed of 24 subunits of the heavy





and light ferritin chains. Variation in ferritin subunit composition may affect the rates of iron uptake and release in different tissues. A major function of ferritin is the storage of iron in a soluble and nontoxic state. Defects in ferritin proteins are associated with several neurodegenerative diseases. This gene has multiple pseudogenes. Several alternatively spliced transcript variants have been observed, but their biological validity has not been determined. [provided by RefSeq, Jul 2008],



Western blot analysis of lysates from SH-SY5Y cells, primary antibody was diluted at 1:1000, 4° over night

