

BACE rabbit pAb

Cat No.:ES5373

For research use only

Overview

Product Name	BACE rabbit pAb
Host species	Rabbit
Applications	IHC;IF;ELISA
Species Cross-Reactivity	Human;Mouse;Rat
Recommended dilutions	Immunohistochemistry: 1/100 - 1/300. Immunofluorescence: 1/200 - 1/1000. ELISA: 1/5000. Not yet tested in other applications.
Immunogen	The antiserum was produced against synthesized peptide derived from human BACE. AA range:452-501
Specificity	BACE Polyclonal Antibody detects endogenous levels of BACE protein.
Formulation	Liquid in PBS containing 50% glycerol, 0.5% BSA and 0.02% sodium azide.
Storage	Store at -20°C. Avoid repeated freeze-thaw cycles.
Protein Name	Beta-secretase 1
Gene Name	BACE1
Cellular localization	Cell membrane ; Single-pass type I membrane protein . Golgi apparatus, trans-Golgi network . Endoplasmic reticulum . Endosome . Cell surface . Cytoplasmic vesicle membrane ; Single-pass type I membrane protein . Membrane raft . Lysosome . Late endosome .
Purification	The antibody was affinity-purified from rabbit antiserum by affinity-chromatography using epitope-specific immunogen.
Clonality	Polyclonal
Concentration	1 mg/ml
Observed band	
Human Gene ID	23621
Human Swiss-Prot Number	P56817
Alternative Names	BACE1; BACE; KIAA1149; Beta-secretase 1; Aspartyl protease 2; ASP2; Asp 2; Beta-site amyloid precursor



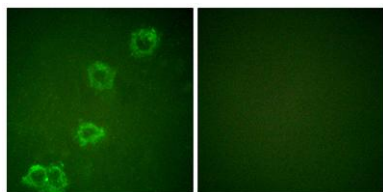


Background

protein cleaving enzyme 1; Beta-site APP cleaving enzyme 1; Memapsin-2; Membrane-associated aspartic protease 2

beta-secretase 1(BACE1) Homo sapiens This gene encodes a member of the peptidase A1 family of aspartic proteases. Alternative splicing results in multiple transcript variants, at least one of which encodes a preproprotein that is proteolytically processed to generate the mature protease. This transmembrane protease catalyzes the first step in the formation of amyloid beta peptide from amyloid precursor protein. Amyloid beta peptides are the main constituent of amyloid beta plaques, which accumulate in the brains of human Alzheimer's disease patients. [provided by RefSeq, Nov 2015],

Immunofluorescence analysis of HUVEC cells, using BACE Antibody. The picture on the right is blocked with the synthesized peptide.



Immunohistochemistry analysis of paraffin-embedded human brain tissue, using BACE Antibody. The picture on the right is blocked with the synthesized peptide.

