



# Encephalopsin rabbit pAb

Cat No.:ES5368

For research use only

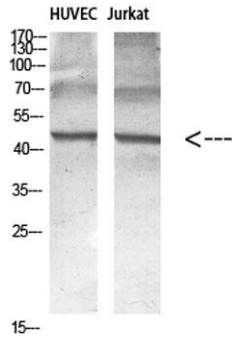
## Overview

|                                 |   |
|---------------------------------|---|
| <b>Product Name</b>             | Encephalopsin rabbit pAb  |
| <b>Host species</b>             | Rabbit  |
| <b>Applications</b>             | WB;IHC;IF;ELISA   |
| <b>Species Cross-Reactivity</b> | Human;Mouse   |
| <b>Recommended dilutions</b>    | Western Blot: 1/500 - 1/2000.<br>Immunohistochemistry: 1/100 - 1/300.<br>Immunofluorescence: 1/200 - 1/1000. ELISA:<br>1/5000. Not yet tested in other applications.            |
| <b>Immunogen</b>                | The antiserum was produced against synthesized peptide derived from human Encephalopsin. AA range:161-210   |
| <b>Specificity</b>              | Encephalopsin Polyclonal Antibody detects endogenous levels of Encephalopsin protein.   |
| <b>Formulation</b>              | Liquid in PBS containing 50% glycerol, 0.5% BSA and 0.02% sodium azide.   |
| <b>Storage</b>                  | Store at -20°C. Avoid repeated freeze-thaw cycles.  |
| <b>Protein Name</b>             | Opsin-3   |
| <b>Gene Name</b>                | OPN3  |
| <b>Cellular localization</b>    | Cell membrane ; Multi-pass membrane protein .<br>Cytoplasm .  |
| <b>Purification</b>             | The antibody was affinity-purified from rabbit antiserum by affinity-chromatography using epitope-specific immunogen.   |
| <b>Clonality</b>                | Polyclonal  |
| <b>Concentration</b>            | 1 mg/ml   |
| <b>Observed band</b>            | 45kD  |
| <b>Human Gene ID</b>            | 23596   |
| <b>Human Swiss-Prot Number</b>  | Q9H1Y3  |
| <b>Alternative Names</b>        | OPN3; ECPN; Opsin-3; Encephalopsin; Panopsin  |
| <b>Background</b>               | Opsins are members of the guanine nucleotide-binding protein (G protein)-coupled receptor superfamily. In addition to the visual opsins, mammals possess several photoreceptive |



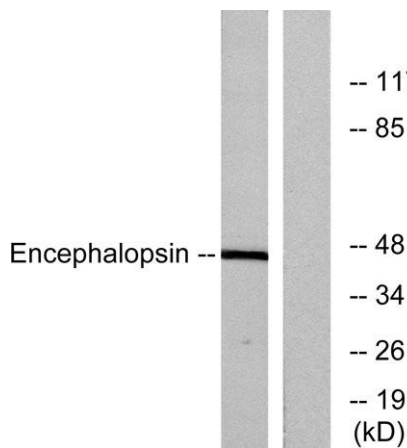
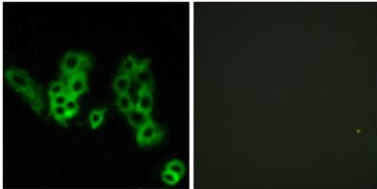


non-visual opsins that are expressed in extraocular tissues. This gene, opsin 3, is strongly expressed in brain and testis and weakly expressed in liver, placenta, heart, lung, skeletal muscle, kidney, and pancreas. The gene may also be expressed in the retina. The protein has the canonical features of a photoreceptive opsin protein. [provided by RefSeq, Jul 2008],



Western blot analysis of various cell Lysate, antibody was diluted at 1:1000. Secondary antibody(catalog#:RS0002) was diluted at 1:20000

Immunofluorescence analysis of MCF7 cells, using Encephalopsin Antibody. The picture on the right is blocked with the synthesized peptide.

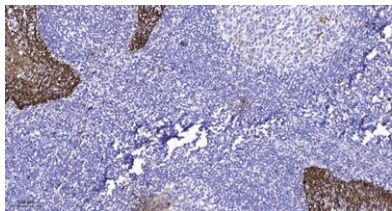


Western blot analysis of lysates from mouse brain, using Encephalopsin Antibody. The lane on the right is blocked with the synthesized peptide.





**ELK Biotechnology**



Immunohistochemical analysis of paraffin-embedded human tonsil. 1, Antibody was diluted at 1:200(4° overnight). 2, Tris-EDTA,pH9.0 was used for antigen retrieval. 3,Secondary antibody was diluted at 1:200(room temperature, 45min).



+86-27-59760950

[ELKbio@ELKbiotech.com](mailto:ELKbio@ELKbiotech.com)

[www.elkbiotech.com](http://www.elkbiotech.com)

23-2, No.388 Gaoxin 2nd Road,Wuhan East Lake Hi-tech Development Zone, Hubei , P.R.C