



LARG rabbit pAb

Cat No.:ES5333

For research use only

Overview

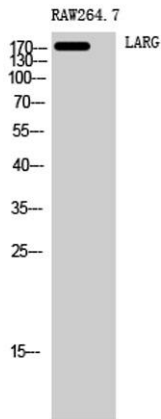
Product Name	LARG rabbit pAb
Host species	Rabbit
Applications	WB;IHC
Species Cross-Reactivity	Human;Mouse;Rat
Recommended dilutions	WB 1:500-2000;IHC-p 1:50-300
Immunogen	The antiserum was produced against synthesized peptide derived from human ARHGEF12. AA range:449-498
Specificity	LARG Polyclonal Antibody detects endogenous levels of LARG protein.
Formulation	Liquid in PBS containing 50% glycerol, 0.5% BSA and 0.02% sodium azide.
Storage	Store at -20°C. Avoid repeated freeze-thaw cycles.
Protein Name	Rho guanine nucleotide exchange factor 12
Gene Name	ARHGEF12
Cellular localization	Cytoplasm . Membrane . Translocated to the membrane upon stimulation. .
Purification	The antibody was affinity-purified from rabbit antiserum by affinity-chromatography using epitope-specific immunogen.
Clonality	Polyclonal
Concentration	1 mg/ml
Observed band	173kD
Human Gene ID	23365
Human Swiss-Prot Number	Q9NZN5
Alternative Names	ARHGEF12; KIAA0382; LARG; Rho guanine nucleotide exchange factor 12; Leukemia-associated RhoGEF
Background	Rho GTPases play a fundamental role in numerous cellular processes that are initiated by extracellular stimuli working through G protein-coupled receptors. The encoded protein may form a complex with G proteins and stimulate Rho-dependent



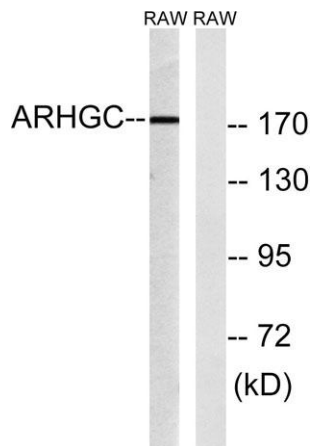


signals. This protein has been observed to form a myeloid/lymphoid fusion partner in acute myeloid leukemia. Three transcript variants encoding different isoforms have been found for this gene. [provided by RefSeq, Jul 2014],

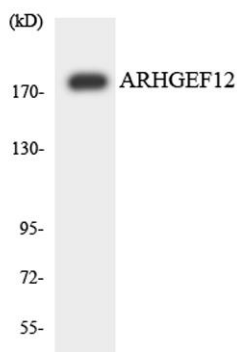
Western Blot analysis of RAW264.7 cells using LARG Polyclonal Antibody



Western blot analysis of lysates from RAW264.7 cells, using ARHGEF12 Antibody. The lane on the right is blocked with the synthesized peptide.

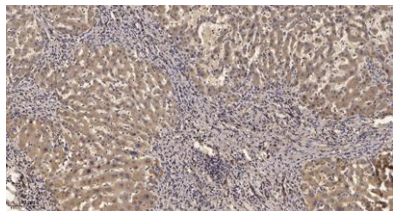


Western blot analysis of the lysates from HUVECcells using ARHGEF12 antibody.





ELK Biotechnology



Immunohistochemical analysis of paraffin-embedded human liver cancer. 1, Antibody was diluted at 1:200(4° overnight). 2, Tris-EDTA,pH9.0 was used for antigen retrieval. 3,Secondary antibody was diluted at 1:200(room temperature, 45min).



+86-27-59760950

ELKbio@ELKbiotech.com

www.elkbiotech.com

23-2, No.388 Gaoxin 2nd Road,Wuhan East Lake Hi-tech Development Zone, Hubei , P.R.C