



CstF-64T rabbit pAb

Cat No.:ES5328

For research use only

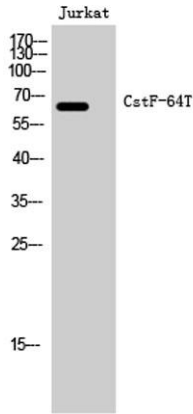
Overview

Product Name	CstF-64T rabbit pAb
Host species	Rabbit
Applications	WB;IHC;IF;ELISA
Species Cross-Reactivity	Human;Mouse;Rat
Recommended dilutions	Western Blot: 1/500 - 1/2000. Immunohistochemistry: 1/100 - 1/300. ELISA: 1/40000. Not yet tested in other applications.
Immunogen	The antiserum was produced against synthesized peptide derived from human CSTF2T. AA range:91-140
Specificity	CstF-64T Polyclonal Antibody detects endogenous levels of CstF-64T protein.
Formulation	Liquid in PBS containing 50% glycerol, 0.5% BSA and 0.02% sodium azide.
Storage	Store at -20°C. Avoid repeated freeze-thaw cycles.
Protein Name	Cleavage stimulation factor subunit 2 tau variant
Gene Name	CSTF2T
Cellular localization	Nucleus .
Purification	The antibody was affinity-purified from rabbit antiserum by affinity-chromatography using epitope-specific immunogen.
Clonality	Polyclonal
Concentration	1 mg/ml
Observed band	64kD
Human Gene ID	23283
Human Swiss-Prot Number	Q9H0L4
Alternative Names	CSTF2T; KIAA0689; Cleavage stimulation factor subunit 2 tau variant; CF-1 64 kDa subunit tau variant; Cleavage stimulation factor 64 kDa subunit tau variant; CSTF 64 kDa subunit tau variant; TauCstF-64
Background	function:May play a significant role in AAUAAA-independent mRNA polyadenylation in

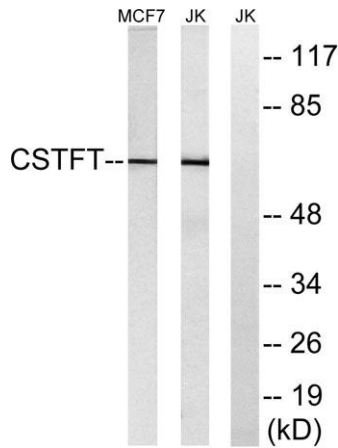




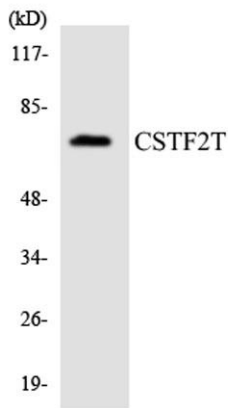
germ cells. Directly involved in the binding to pre-mRNAs.,PTM:Phosphorylated upon DNA damage, probably by ATM or ATR.,similarity:Contains 1 RRM (RNA recognition motif) domain.,



Western Blot analysis of Jurkat cells using CstF-64T Polyclonal Antibody cells nucleus extracted by Minute TM Cytoplasmic and Nuclear Fractionation kit (SC-003,Inventbiotech,MN,USA).



Western blot analysis of lysates from Jurkat and MCF-7 cells, using CSTF2T Antibody. The lane on the right is blocked with the synthesized peptide.

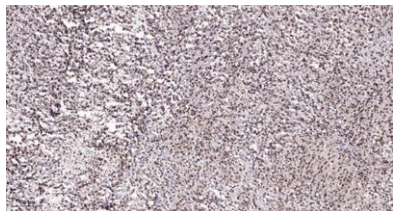


Western blot analysis of the lysates from Jurkat cells using CSTF2T antibody.





ELK Biotechnology



Immunohistochemical analysis of paraffin-embedded human Colon cancer. 1, Antibody was diluted at 1:200(4° overnight). 2, Tris-EDTA,pH9.0 was used for antigen retrieval. 3,Secondary antibody was diluted at 1:200(room temperature, 45min).



+86-27-59760950

ELKbio@ELKbiotech.com

www.elkbiotech.com

23-2, No.388 Gaoxin 2nd Road,Wuhan East Lake Hi-tech Development Zone, Hubei , P.R.C