



# Glypican-5 rabbit pAb

Cat No.:ES5250

For research use only

## Overview

<b>Product Name</b>	Glypican-5 rabbit pAb
<b>Host species</b>	Rabbit
<b>Applications</b>	WB;ELISA
<b>Species Cross-Reactivity</b>	Human;Mouse;Rat
<b>Recommended dilutions</b>	Western Blot: 1/500 - 1/2000. ELISA: 1/40000. Not yet tested in other applications.
<b>Immunogen</b>	Synthesized peptide derived from the Internal region of human Glypican-5.
<b>Specificity</b>	Glypican-5 Polyclonal Antibody detects endogenous levels of Glypican-5 protein.
<b>Formulation</b>	Liquid in PBS containing 50% glycerol, 0.5% BSA and 0.02% sodium azide.
<b>Storage</b>	Store at -20°C. Avoid repeated freeze-thaw cycles.
<b>Protein Name</b>	Glypican-5
<b>Gene Name</b>	GPC5
<b>Cellular localization</b>	Cell membrane ; Lipid-anchor, GPI-anchor ; Extracellular side .; [Secreted glypican-5]: Secreted, extracellular space .
<b>Purification</b>	The antibody was affinity-purified from rabbit antiserum by affinity-chromatography using epitope-specific immunogen.
<b>Clonality</b>	Polyclonal
<b>Concentration</b>	1 mg/ml
<b>Observed band</b>	65kD
<b>Human Gene ID</b>	2262
<b>Human Swiss-Prot Number</b>	P78333
<b>Alternative Names</b>	GPC5; Glypican-5
<b>Background</b>	Cell surface heparan sulfate proteoglycans are composed of a membrane-associated protein core substituted with a variable number of heparan sulfate chains. Members of the glypican-related integral membrane proteoglycan family (GRIPS) contain a core protein anchored to the cytoplasmic

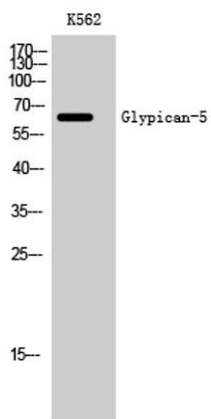




**ELK Biotechnology**

membrane via a glycosyl phosphatidylinositol linkage. These proteins may play a role in the control of cell division and growth regulation. [provided by RefSeq, Jul 2008],

Western Blot analysis of K562 cells using Glypican-5 Polyclonal Antibody



+86-27-59760950

[ELKbio@ELKbiotech.com](mailto:ELKbio@ELKbiotech.com)

[www.elkbiotech.com](http://www.elkbiotech.com)

23-2, No.388 Gaoxin 2nd Road, Wuhan East Lake Hi-tech Development Zone, Hubei, P.R.C