



AK1 rabbit pAb

Cat No.:ES5120

For research use only

Overview

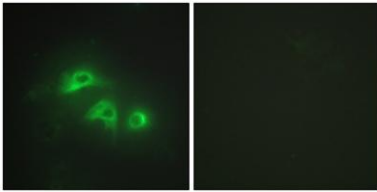
Product Name	AK1 rabbit pAb
Host species	Rabbit
Applications	IHC;IF;ELISA
Species Cross-Reactivity	Human;Mouse;Rat
Recommended dilutions	Immunohistochemistry: 1/100 - 1/300. Immunofluorescence: 1/200 - 1/1000. ELISA: 1/5000. Not yet tested in other applications.
Immunogen	The antiserum was produced against synthesized peptide derived from human KAD1 . AA range:101-150
Specificity	AK1 Polyclonal Antibody detects endogenous levels of AK1 protein.
Formulation	Liquid in PBS containing 50% glycerol, 0.5% BSA and 0.02% sodium azide.
Storage	Store at -20°C. Avoid repeated freeze-thaw cycles.
Protein Name	Adenylate kinase isoenzyme 1
Gene Name	AK1
Cellular localization	Cytoplasm.
Purification	The antibody was affinity-purified from rabbit antiserum by affinity-chromatography using epitope-specific immunogen.
Clonality	Polyclonal
Concentration	1 mg/ml
Observed band	
Human Gene ID	203
Human Swiss-Prot Number	P00568
Alternative Names	AK1; Adenylate kinase isoenzyme 1; AK 1; ATP-AMP transphosphorylase 1; Myokinase
Background	adenylate kinase 1(AK1) Homo sapiens This gene encodes an adenylate kinase enzyme involved in energy metabolism and homeostasis of cellular adenine nucleotide ratios in different intracellular compartments. This gene is highly expressed in





skeletal muscle, brain and erythrocytes. Certain mutations in this gene resulting in a functionally inadequate enzyme are associated with a rare genetic disorder causing nonspherocytic hemolytic anemia. Alternative splicing of this gene results in multiple transcript variants encoding different isoforms. [provided by RefSeq, Dec 2015],

Immunofluorescence analysis of HepG2 cells, using KAD1 Antibody . The picture on the right is blocked with the synthesized peptide.



Immunohistochemistry analysis of paraffin-embedded human lung carcinoma tissue, using KAD1 Antibody . The picture on the right is blocked with the synthesized peptide.

