



# EGFR (phospho Ser1070) rabbit pAb

Cat No.:ES5053

For research use only

## Overview

|                          |   |
|--------------------------|---|
| Product Name             | EGFR (phospho Ser1070) rabbit pAb   |
| Host species             | Rabbit  |
| Applications             | WB;IHC;IF;ELISA   |
| Species Cross-Reactivity | Human;Mouse;Rat   |
| Recommended dilutions    | Western Blot: 1/500 - 1/2000.<br>Immunohistochemistry: 1/100 - 1/300. ELISA:<br>1/20000. Not yet tested in other applications.  |
| Immunogen                | The antiserum was produced against synthesized peptide derived from human EGFR around the phosphorylation site of Ser1070. AA range:1041-1090   |
| Specificity              | Phospho-EGFR (S1070) Polyclonal Antibody detects endogenous levels of EGFR protein only when phosphorylated at S1070.   |
| Formulation              | Liquid in PBS containing 50% glycerol, 0.5% BSA and 0.02% sodium azide.   |
| Storage                  | Store at -20°C. Avoid repeated freeze-thaw cycles.  |
| Protein Name             | Epidermal growth factor receptor  |
| Gene Name                | EGFR  |
| Cellular localization    | Cell membrane ; Single-pass type I membrane protein . Endoplasmic reticulum membrane ; Single-pass type I membrane protein. Golgi apparatus membrane; Single-pass type I membrane protein. Nucleus membrane; Single-pass type I membrane protein. Endosome . En |
| Purification             | The antibody was affinity-purified from rabbit antiserum by affinity-chromatography using epitope-specific immunogen.   |
| Clonality                | Polyclonal  |
| Concentration            | 1 mg/ml   |
| Observed band            | 175kD   |
| Human Gene ID            | 1956  |
| Human Swiss-Prot Number  | P00533  |





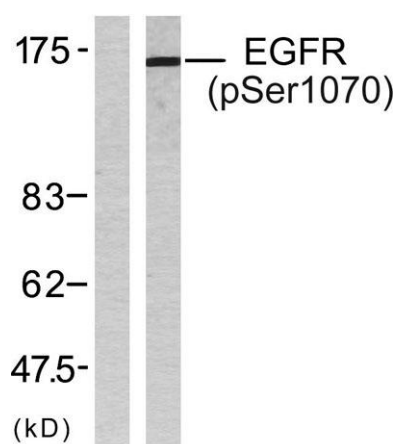
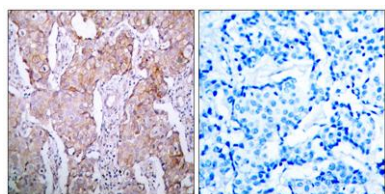
### Alternative Names

EGFR; ERBB; ERBB1; HER1; Epidermal growth factor receptor; Proto-oncogene c-ErbB-1; Receptor tyrosine-protein kinase erbB-1

### Background

The protein encoded by this gene is a transmembrane glycoprotein that is a member of the protein kinase superfamily. This protein is a receptor for members of the epidermal growth factor family. EGFR is a cell surface protein that binds to epidermal growth factor. Binding of the protein to a ligand induces receptor dimerization and tyrosine autophosphorylation and leads to cell proliferation. Mutations in this gene are associated with lung cancer. [provided by RefSeq, Jun 2016],

Immunohistochemistry analysis of paraffin-embedded human breast carcinoma, using EGFR (Phospho-Ser1070) Antibody. The picture on the right is blocked with the phospho peptide.



Western blot analysis of lysates from SK-OV3 cells treated with EGF, using EGFR (Phospho-Ser1070) Antibody. The lane on the left is blocked with the phospho peptide.

