



Cystatin SN rabbit pAb

Cat No.:ES4871

For research use only

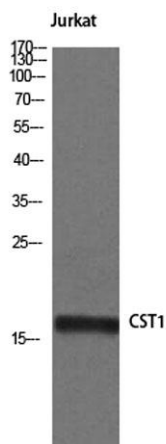
Overview

| | |
|---------------------------------|---|
| Product Name | Cystatin SN rabbit pAb |
| Host species | Rabbit |
| Applications | WB;IHC;IF;ELISA |
| Species Cross-Reactivity | Human;Rat;Mouse; |
| Recommended dilutions | Immunohistochemistry: 1/100 - 1/300. Immunofluorescence: 1/200 - 1/1000. ELISA: 1/20000. Not yet tested in other applications. |
| Immunogen | The antiserum was produced against synthesized peptide derived from human CST1. AA range:31-80 |
| Specificity | Cystatin SN Polyclonal Antibody detects endogenous levels of Cystatin SN protein. |
| Formulation | Liquid in PBS containing 50% glycerol, 0.5% BSA and 0.02% sodium azide. |
| Storage | Store at -20°C. Avoid repeated freeze-thaw cycles. |
| Protein Name | Cystatin-SN |
| Gene Name | CST1 |
| Cellular localization | Secreted . |
| Purification | The antibody was affinity-purified from rabbit antiserum by affinity-chromatography using epitope-specific immunogen. |
| Clonality | Polyclonal |
| Concentration | 1 mg/ml |
| Observed band | |
| Human Gene ID | 1469 |
| Human Swiss-Prot Number | P01037 |
| Alternative Names | CST1; Cystatin-SN; Cystatin-SA-I; Cystatin-1; Salivary cystatin-SA-1 |
| Background | The cystatin superfamily encompasses proteins that contain multiple cystatin-like sequences. Some of the members are active cysteine protease inhibitors, while others have lost or perhaps never acquired this inhibitory activity. There are three inhibitory families in the superfamily, including the type 1 |



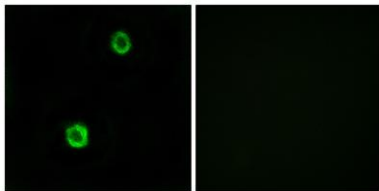


cystatins (stefins), type 2 cystatins and the kininogens. The type 2 cystatin proteins are a class of cysteine proteinase inhibitors found in a variety of human fluids and secretions, where they appear to provide protective functions. The cystatin locus on chromosome 20 contains the majority of the type 2 cystatin genes and pseudogenes. This gene is located in the cystatin locus and encodes a cysteine proteinase inhibitor found in saliva, tears, urine, and seminal fluid. [provided by RefSeq, Jul 2008],



Western Blot analysis of Jurkat cells using Cystatin SN Polyclonal Antibody

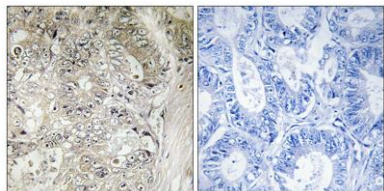
Immunofluorescence analysis of MCF7 cells, using CST1 Antibody. The picture on the right is blocked with the synthesized peptide.





ELK Biotechnology

Immunohistochemistry analysis of paraffin-embedded human colon carcinoma tissue, using CST1 Antibody. The picture on the right is blocked with the synthesized peptide.



+86-27-59760950

ELKbio@ELKbiotech.com

www.elkbiotech.com

23-2, No.388 Gaoxin 2nd Road,Wuhan East Lake Hi-tech Development Zone, Hubei , P.R.C