



# Relaxin Receptor 2 rabbit pAb

Cat No.:ES4700

For research use only

## Overview

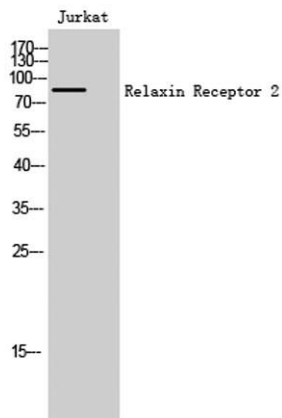
|                                 |   |
|---------------------------------|---|
| <b>Product Name</b>             | Relaxin Receptor 2 rabbit pAb   |
| <b>Host species</b>             | Rabbit  |
| <b>Applications</b>             | WB;IHC  |
| <b>Species Cross-Reactivity</b> | Human;Mouse;Rat   |
| <b>Recommended dilutions</b>    | WB 1:500-2000;IHC-p 1:50-300  |
| <b>Immunogen</b>                | The antiserum was produced against synthesized peptide derived from human RXFP2. AA range:113-162   |
| <b>Specificity</b>              | Relaxin Receptor 2 Polyclonal Antibody detects endogenous levels of Relaxin Receptor 2 protein.   |
| <b>Formulation</b>              | Liquid in PBS containing 50% glycerol, 0.5% BSA and 0.02% sodium azide.   |
| <b>Storage</b>                  | Store at -20°C. Avoid repeated freeze-thaw cycles.  |
| <b>Protein Name</b>             | Relaxin receptor 2  |
| <b>Gene Name</b>                | RXFP2   |
| <b>Cellular localization</b>    | Cell membrane; Multi-pass membrane protein.   |
| <b>Purification</b>             | The antibody was affinity-purified from rabbit antiserum by affinity-chromatography using epitope-specific immunogen.   |
| <b>Clonality</b>                | Polyclonal  |
| <b>Concentration</b>            | 1 mg/ml   |
| <b>Observed band</b>            | 86kD  |
| <b>Human Gene ID</b>            | 122042  |
| <b>Human Swiss-Prot Number</b>  | Q8WXD0  |
| <b>Alternative Names</b>        | RXFP2; GPR106; GREAT; LGR8; Relaxin receptor 2; G-protein coupled receptor 106; G-protein coupled receptor affecting testicular descent; Leucine-rich repeat-containing G-protein coupled receptor 8; Relaxin family peptide receptor 2 |
| <b>Background</b>               | This gene encodes a member of the GPCR (G protein-coupled, 7-transmembrane receptor) family. Mutations in this gene are associated with cryptorchidism. Alternatively spliced transcript  |



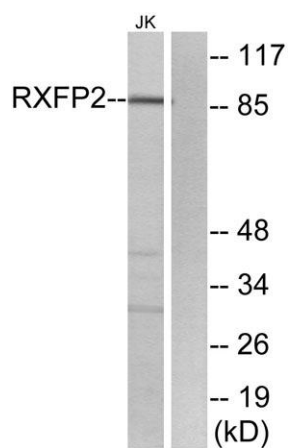


variants encoding different isoforms have been found for this gene.[provided by RefSeq, Oct 2009],

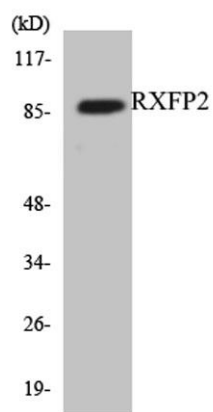
Western Blot analysis of Jurkat cells using Relaxin Receptor 2 Polyclonal Antibody



Western blot analysis of lysates from Jurkat cells, using RXFP2 Antibody. The lane on the right is blocked with the synthesized peptide.

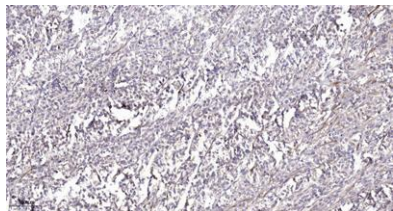


Western blot analysis of the lysates from HUVEC cells using RXFP2 antibody.





**ELK Biotechnology**



Immunohistochemical analysis of paraffin-embedded human Colon cancer. 1, Antibody was diluted at 1:200(4° overnight). 2, Tris-EDTA,pH9.0 was used for antigen retrieval. 3,Secondary antibody was diluted at 1:200(room temperature, 45min).



+86-27-59760950

[ELKbio@ELKbiotech.com](mailto:ELKbio@ELKbiotech.com)

[www.elkbiotech.com](http://www.elkbiotech.com)

23-2, No.388 Gaoxin 2nd Road,Wuhan East Lake Hi-tech Development Zone, Hubei , P.R.C