

CYP2R1 rabbit pAb

Cat No.:ES4681

For research use only

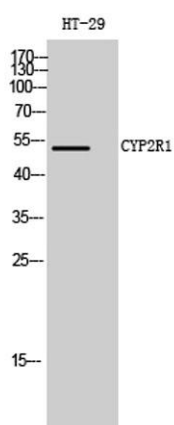
Overview

Product Name	CYP2R1 rabbit pAb
Host species	Rabbit
Applications	WB;IHC;IF;ELISA
Species Cross-Reactivity	Human;Mouse;Monkey
Recommended dilutions	Western Blot: 1/500 - 1/2000. Immunohistochemistry: 1/100 - 1/300. ELISA: 1/40000. Not yet tested in other applications.
Immunogen	The antiserum was produced against synthesized peptide derived from human CYP2R1. AA range:251-300
Specificity	CYP2R1 Polyclonal Antibody detects endogenous levels of CYP2R1 protein.
Formulation	Liquid in PBS containing 50% glycerol, 0.5% BSA and 0.02% sodium azide.
Storage	Store at -20°C. Avoid repeated freeze-thaw cycles.
Protein Name	Vitamin D 25-hydroxylase
Gene Name	CYP2R1
Cellular localization	Endoplasmic reticulum membrane ; Peripheral membrane protein. Microsome membrane ; Peripheral membrane protein.
Purification	The antibody was affinity-purified from rabbit antiserum by affinity-chromatography using epitope-specific immunogen.
Clonality	Polyclonal
Concentration	1 mg/ml
Observed band	52kD
Human Gene ID	120227
Human Swiss-Prot Number	Q6VVX0
Alternative Names	CYP2R1; Vitamin D 25-hydroxylase; Cytochrome P450 2R1
Background	This gene encodes a member of the cytochrome P450 superfamily of enzymes. The cytochrome P450 proteins are monooxygenases which catalyze many

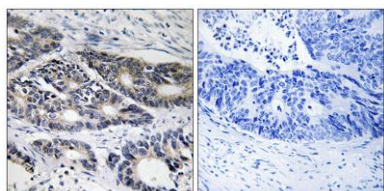




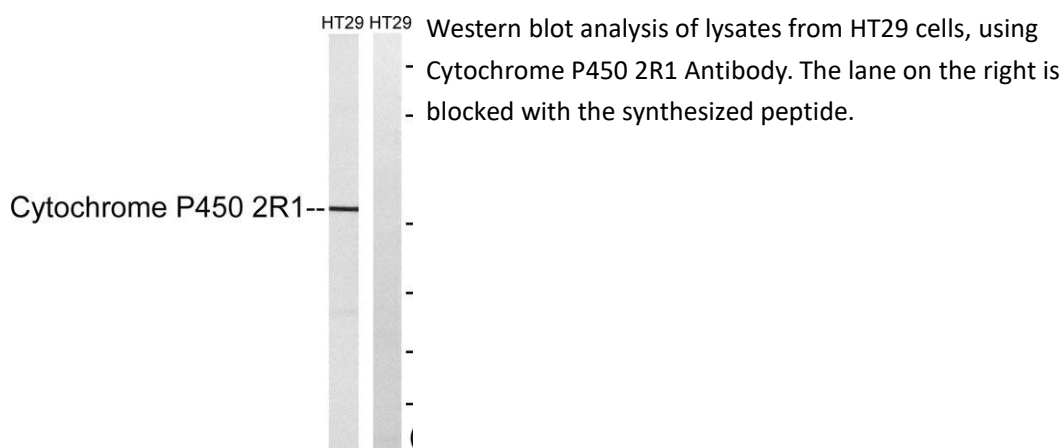
reactions involved in drug metabolism and synthesis of cholesterol, steroids and other lipids. This enzyme is a microsomal vitamin D hydroxylase that converts vitamin D into the active ligand for the vitamin D receptor. A mutation in this gene has been associated with selective 25-hydroxyvitamin D deficiency. [provided by RefSeq, Jul 2008],



Western Blot analysis of HT-29 cells using CYP2R1 Polyclonal Antibody



Immunohistochemistry analysis of paraffin-embedded human colon carcinoma, using Cytochrome P450 2R1 Antibody. The picture on the right is blocked with the synthesized peptide.

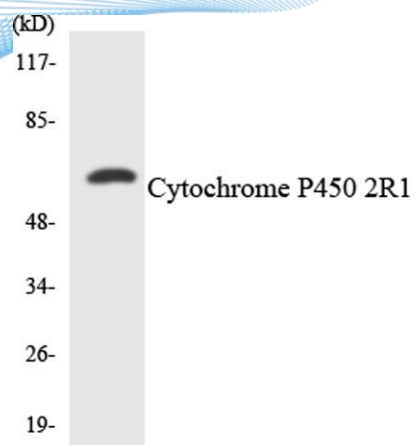


Western blot analysis of lysates from HT29 cells, using
- Cytochrome P450 2R1 Antibody. The lane on the right is
- blocked with the synthesized peptide.





ELK Biotechnology



Western blot analysis of the lysates from HT-29 cells using Cytochrome P450 2R1 antibody.



+86-27-59760950

ELKbio@ELKbiotech.com

www.elkbiotech.com

23-2, No.388 Gaoxin 2nd Road, Wuhan East Lake Hi-tech Development Zone, Hubei, P.R.C.