



# GBP4 rabbit pAb

Cat No.:ES4655

For research use only

## Overview

<b>Product Name</b>	GBP4 rabbit pAb
<b>Host species</b>	Rabbit
<b>Applications</b>	WB;IHC;IF;ELISA
<b>Species Cross-Reactivity</b>	Human;Rat;Mouse;
<b>Recommended dilutions</b>	Western Blot: 1/500 - 1/2000. Immunohistochemistry: 1/100 - 1/300. ELISA: 1/40000. Not yet tested in other applications.
<b>Immunogen</b>	The antiserum was produced against synthesized peptide derived from human GBP4. AA range:551-600
<b>Specificity</b>	GBP4 Polyclonal Antibody detects endogenous levels of GBP4 protein.
<b>Formulation</b>	Liquid in PBS containing 50% glycerol, 0.5% BSA and 0.02% sodium azide.
<b>Storage</b>	Store at -20°C. Avoid repeated freeze-thaw cycles.
<b>Protein Name</b>	Guanylate-binding protein 4
<b>Gene Name</b>	GBP4
<b>Cellular localization</b>	Cytoplasm . Nucleus . Cytoplasm, perinuclear region . Golgi apparatus membrane . Heterodimers with GBP1, GBP2 and GBP5 localize in the compartment of the prenylated GBPs: with GBP1 in a vesicle-like compartment, with GBP2, around the nucleus and with GBP-
<b>Purification</b>	The antibody was affinity-purified from rabbit antiserum by affinity-chromatography using epitope-specific immunogen.
<b>Clonality</b>	Polyclonal
<b>Concentration</b>	1 mg/ml
<b>Observed band</b>	73kD
<b>Human Gene ID</b>	115361
<b>Human Swiss-Prot Number</b>	Q96PP9
<b>Alternative Names</b>	GBP4; Guanylate-binding protein 4; GTP-binding protein 4; GBP-4; Guanine nucleotide-binding



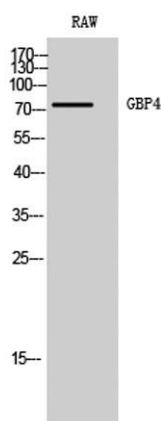


## Background

### protein 4

Guanylate-binding proteins, such as GBP4, are induced by interferon and hydrolyze GTP to both GDP and GMP (Vestal, 2005 [PubMed 16108726]).[supplied by OMIM, Dec 2008],

Western Blot analysis of RAW cells using GBP4 Polyclonal Antibody



Immunohistochemistry analysis of paraffin-embedded human breast carcinoma, using GBP4 Antibody. The picture on the right is blocked with the synthesized peptide.

