



GPR146 rabbit pAb

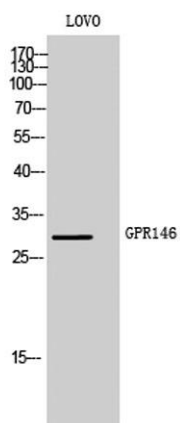
Cat No.:ES4654

For research use only

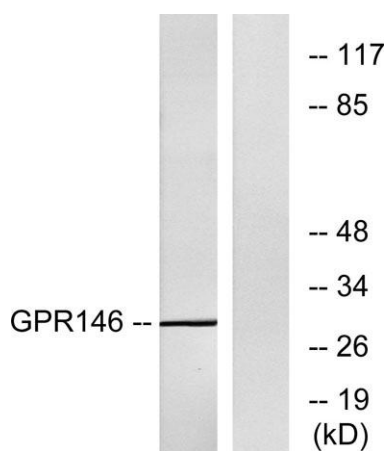
Overview

Product Name	GPR146 rabbit pAb
Host species	Rabbit
Applications	WB;IF;ELISA
Species Cross-Reactivity	Human;Rat;Mouse;
Recommended dilutions	Western Blot: 1/500 - 1/2000. Immunofluorescence: 1/200 - 1/1000. ELISA: 1/5000. Not yet tested in other applications.
Immunogen	The antiserum was produced against synthesized peptide derived from human GPR146. AA range:191-240
Specificity	GPR146 Polyclonal Antibody detects endogenous levels of GPR146 protein.
Formulation	Liquid in PBS containing 50% glycerol, 0.5% BSA and 0.02% sodium azide.
Storage	Store at -20°C. Avoid repeated freeze-thaw cycles.
Protein Name	Probable G-protein coupled receptor 146
Gene Name	GPR146
Cellular localization	Cell membrane; Multi-pass membrane protein.
Purification	The antibody was affinity-purified from rabbit antiserum by affinity-chromatography using epitope-specific immunogen.
Clonality	Polyclonal
Concentration	1 mg/ml
Observed band	30kD
Human Gene ID	115330
Human Swiss-Prot Number	Q96CH1
Alternative Names	GPR146; PGR8; Probable G-protein coupled receptor 146; G-protein coupled receptor PGR8
Background	function:Orphan receptor.,similarity:Belongs to the G-protein coupled receptor 1 family.,





Western Blot analysis of LOVO cells using GPR146 Polyclonal Antibody



Western blot analysis of lysates from LOVO cells, using GPR146 Antibody. The lane on the right is blocked with the synthesized peptide.

