



A Cyclase VII rabbit pAb

Cat No.:ES4635

For research use only

Overview

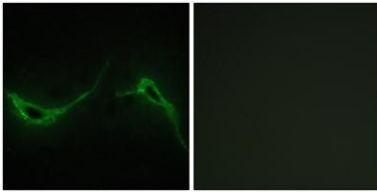
Product Name	A Cyclase VII rabbit pAb
Host species	Rabbit
Applications	IHC;IF;ELISA
Species Cross-Reactivity	Human;Mouse
Recommended dilutions	Immunohistochemistry: 1/100 - 1/300. Immunofluorescence: 1/200 - 1/1000. ELISA: 1/5000. Not yet tested in other applications.
Immunogen	The antiserum was produced against synthesized peptide derived from human ADCY7. AA range:191-240
Specificity	A Cyclase VII Polyclonal Antibody detects endogenous levels of A Cyclase VII protein.
Formulation	Liquid in PBS containing 50% glycerol, 0.5% BSA and 0.02% sodium azide.
Storage	Store at -20°C. Avoid repeated freeze-thaw cycles.
Protein Name	Adenylate cyclase type 7
Gene Name	ADCY7
Cellular localization	Membrane; Multi-pass membrane protein.
Purification	The antibody was affinity-purified from rabbit antiserum by affinity-chromatography using epitope-specific immunogen.
Clonality	Polyclonal
Concentration	1 mg/ml
Observed band	
Human Gene ID	113
Human Swiss-Prot Number	P51828
Alternative Names	ADCY7; KIAA0037; Adenylate cyclase type 7; ATP pyrophosphate-lyase 7; Adenylate cyclase type VII; Adenyl cyclase 7
Background	This gene encodes a membrane-bound adenylate cyclase that catalyses the formation of cyclic AMP from ATP and is inhibitable by calcium. The product of this gene is a member of the adenyl cyclase





class-4/guanylyl cyclase enzyme family that is characterized by the presence of twelve membrane-spanning domains in its sequences. Several transcript variants have been observed for this gene, but the full-length natures of only two have been determined so far. [provided by RefSeq, Oct 2013],

Immunofluorescence analysis of NIH/3T3 cells, using ADCY7 Antibody. The picture on the right is blocked with the synthesized peptide.



Immunohistochemistry analysis of paraffin-embedded human brain tissue, using ADCY7 Antibody. The picture on the right is blocked with the synthesized peptide.

