



# Rab 40B rabbit pAb

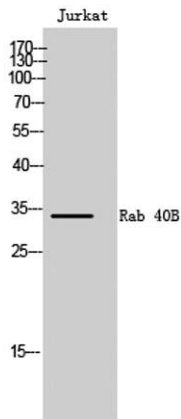
Cat No.:ES4575

For research use only

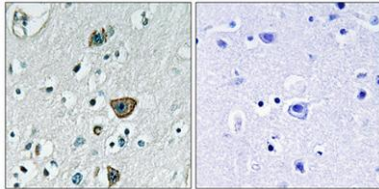
## Overview

<b>Product Name</b>	Rab 40B rabbit pAb
<b>Host species</b>	Rabbit
<b>Applications</b>	WB;IHC;IF;ELISA
<b>Species Cross-Reactivity</b>	Human;Rat;Mouse;
<b>Recommended dilutions</b>	Western Blot: 1/500 - 1/2000. ELISA: 1/40000. Not yet tested in other applications.
<b>Immunogen</b>	The antiserum was produced against synthesized peptide derived from human RAB40B. AA range:229-278
<b>Specificity</b>	Rab 40B Polyclonal Antibody detects endogenous levels of Rab 40B protein.
<b>Formulation</b>	Liquid in PBS containing 50% glycerol, 0.5% BSA and 0.02% sodium azide.
<b>Storage</b>	Store at -20°C. Avoid repeated freeze-thaw cycles.
<b>Protein Name</b>	Ras-related protein Rab-40B
<b>Gene Name</b>	RAB40B
<b>Cellular localization</b>	Cell membrane ; Lipid-anchor ; Cytoplasmic side .
<b>Purification</b>	The antibody was affinity-purified from rabbit antiserum by affinity-chromatography using epitope-specific immunogen.
<b>Clonality</b>	Polyclonal
<b>Concentration</b>	1 mg/ml
<b>Observed band</b>	34kD
<b>Human Gene ID</b>	10966
<b>Human Swiss-Prot Number</b>	Q12829
<b>Alternative Names</b>	RAB40B; SEC4L; Ras-related protein Rab-40B; SOCS box-containing protein RAR; Protein Rar
<b>Background</b>	The protein encoded by this gene has similarity to a yeast protein which suggests a role of the gene product in regulating secretory vesicles. [provided by RefSeq, Jul 2008],

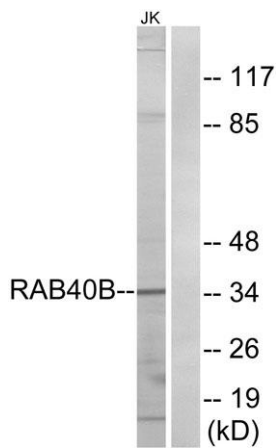




Western Blot analysis of Jurkat cells using Rab 40B Polyclonal Antibody



Immunohistochemical analysis of paraffin-embedded Human brain. Antibody was diluted at 1:100(4° overnight). High-pressure and temperature Tris-EDTA,pH8.0 was used for antigen retrieval. Negative contrl (right) obtained from antibody was pre-absorbed by i



Western blot analysis of lysates from Jurkat cells, using RAB40B Antibody. The lane on the right is blocked with the synthesized peptide.

