



PHAPI2 rabbit pAb

Cat No.:ES4504

For research use only

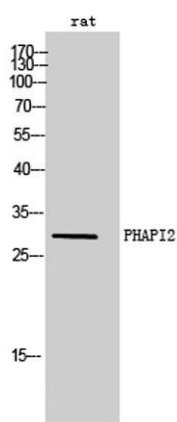
Overview

Product Name	PHAPI2 rabbit pAb
Host species	Rabbit
Applications	WB;ELISA;IHC
Species Cross-Reactivity	Human;Mouse;Rat
Recommended dilutions	WB 1:500-2000;IHC-p 1:50-300; ELISA 2000-20000
Immunogen	The antiserum was produced against synthesized peptide derived from human ANP32B. AA range:1-50
Specificity	PHAPI2 Polyclonal Antibody detects endogenous levels of PHAPI2 protein.
Formulation	Liquid in PBS containing 50% glycerol, 0.5% BSA and 0.02% sodium azide.
Storage	Store at -20°C. Avoid repeated freeze-thaw cycles.
Protein Name	Acidic leucine-rich nuclear phosphoprotein 32 family member B
Gene Name	ANP32B
Cellular localization	[Isoform 1]: Nucleus . Cytoplasm . Accumulates in the nuclei at the S phase. .; [Isoform 2]: Cytoplasm. Lacks a nuclear localization signal.
Purification	The antibody was affinity-purified from rabbit antiserum by affinity-chromatography using epitope-specific immunogen.
Clonality	Polyclonal
Concentration	1 mg/ml
Observed band	29kD
Human Gene ID	10541
Human Swiss-Prot Number	Q92688
Alternative Names	ANP32B; APRIL; PHAPI2; Acidic leucine-rich nuclear phosphoprotein 32 family member B; Acidic protein rich in leucines; Putative HLA-DR-associated protein I-2; PHAPI2; Silver-stainable protein SSP29
Background	function:Multifunctional protein working as a cell cycle progression factor as well as a cell survival

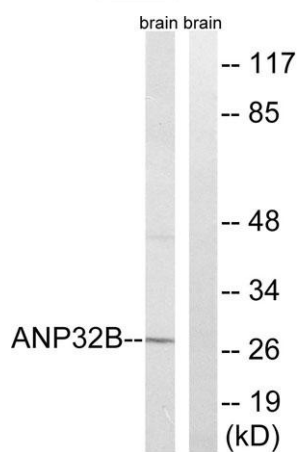




factor. Required for the progression from the G1 to the S phase. Anti-apoptotic protein which functions as a caspase-3 inhibitor. Has no phosphatase 2A (PP2A) inhibitor activity.,similarity:Belongs to the ANP32 family.,similarity:Contains 4 LRR (leucine-rich) repeats.,subcellular location:Accumulates in the nuclei at the S phase.,tissue specificity:Expressed in heart, lung, pancreas, prostate and in spleen, thymus and placenta.,



Western Blot analysis of rat cells using PHAPI2 Polyclonal Antibody cells nucleus extracted by Minute TM Cytoplasmic and Nuclear Fractionation kit (SC-003, Inventbiotech, MN, USA).

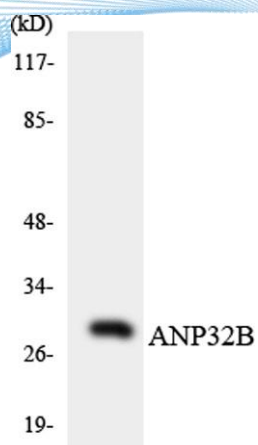


Western blot analysis of lysates from rat brain cells, using ANP32B Antibody. The lane on the right is blocked with the synthesized peptide.

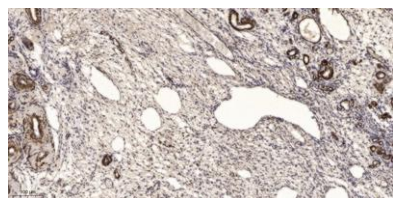




ELK Biotechnology



Western blot analysis of the lysates from HeLa cells using ANP32B antibody.



Immunohistochemical analysis of paraffin-embedded human oophoroma. 1, Antibody was diluted at 1:200(4° overnight). 2, Tris-EDTA,pH9.0 was used for antigen retrieval. 3,Secondary antibody was diluted at 1:200(room temperature, 45min).



+86-27-59760950

ELKbio@ELKbiotech.com

www.elkbiotech.com

23-2, No.388 Gaoxin 2nd Road,Wuhan East Lake Hi-tech Development Zone, Hubei , P.R.C