



CDKN3 rabbit pAb

Cat No.:ES4465

For research use only

Overview

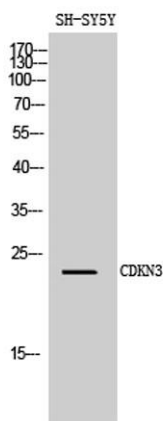
| | |
|---------------------------------|-------------------------------------------------------------------------------------------------------------------------------------------------------------------------------------------------------------------------------|
| Product Name | CDKN3 rabbit pAb |
| Host species | Rabbit |
| Applications | WB;IHC;IF;ELISA |
| Species Cross-Reactivity | Human;Mouse |
| Recommended dilutions | Western Blot: 1/500 - 1/2000. Immunohistochemistry: 1/100 - 1/300. ELISA: 1/20000. Not yet tested in other applications. |
| Immunogen | The antiserum was produced against synthesized peptide derived from human CDKN3. AA range:31-80 |
| Specificity | CDKN3 Polyclonal Antibody detects endogenous levels of CDKN3 protein. |
| Formulation | Liquid in PBS containing 50% glycerol, 0.5% BSA and 0.02% sodium azide. |
| Storage | Store at -20°C. Avoid repeated freeze-thaw cycles. |
| Protein Name | Cyclin-dependent kinase inhibitor 3 |
| Gene Name | CDKN3 |
| Cellular localization | Cytoplasm, perinuclear region . |
| Purification | The antibody was affinity-purified from rabbit antiserum by affinity-chromatography using epitope-specific immunogen. |
| Clonality | Polyclonal |
| Concentration | 1 mg/ml |
| Observed band | 23kD |
| Human Gene ID | 1033 |
| Human Swiss-Prot Number | Q16667 |
| Alternative Names | CDKN3; CDI1; CIP2; KAP; Cyclin-dependent kinase inhibitor 3; CDK2-associated dual-specificity phosphatase; Cyclin-dependent kinase interactor 1; Cyclin-dependent kinase-interacting protein 2; Kinase-associated phosphatase |
| Background | The protein encoded by this gene belongs to the dual specificity protein phosphatase family. It was |



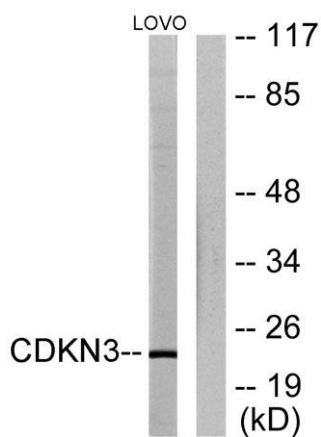


identified as a cyclin-dependent kinase inhibitor, and has been shown to interact with, and dephosphorylate CDK2 kinase, thus prevent the activation of CDK2 kinase. This gene was reported to be deleted, mutated, or overexpressed in several kinds of cancers. Alternatively spliced transcript variants encoding different isoforms have been found for this gene. [provided by RefSeq, Aug 2008],

Western Blot analysis of SH-SY5Y cells using CDKN3 Polyclonal Antibody diluted at 1:1000



Western blot analysis of lysates from LOVO cells, using CDKN3 Antibody. The lane on the right is blocked with the synthesized peptide.



Immunohistochemical analysis of paraffin-embedded human Colon cancer. 1, Antibody was diluted at 1:200(4° overnight). 2, Tris-EDTA,pH9.0 was used for antigen retrieval. 3,Secondary antibody was diluted at 1:200(room temperature, 45min).

