



NMUR1 rabbit pAb

Cat No.:ES4461

For research use only

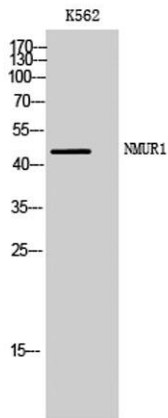
Overview

Product Name	NMUR1 rabbit pAb
Host species	Rabbit
Applications	WB;IF;ELISA
Species Cross-Reactivity	Human;Rat;Mouse;
Recommended dilutions	Western Blot: 1/500 - 1/2000. Immunofluorescence: 1/200 - 1/1000. ELISA: 1/5000. Not yet tested in other applications.
Immunogen	The antiserum was produced against synthesized peptide derived from human NMUR1. AA range:1-50
Specificity	NMUR1 Polyclonal Antibody detects endogenous levels of NMUR1 protein.
Formulation	Liquid in PBS containing 50% glycerol, 0.5% BSA and 0.02% sodium azide.
Storage	Store at -20°C. Avoid repeated freeze-thaw cycles.
Protein Name	Neuromedin-U receptor 1
Gene Name	NMUR1
Cellular localization	Cell membrane; Multi-pass membrane protein.
Purification	The antibody was affinity-purified from rabbit antiserum by affinity-chromatography using epitope-specific immunogen.
Clonality	Polyclonal
Concentration	1 mg/ml
Observed band	48kD
Human Gene ID	10316
Human Swiss-Prot Number	Q9HB89
Alternative Names	NMUR1; GPR66; Neuromedin-U receptor 1; NMU-R1; G-protein coupled receptor 66; G-protein coupled receptor FM-3
Background	caution:It is uncertain whether Met-1 or Met-24 is the initiator.,function:Receptor for the neuromedin-U and neuromedin-S neuropeptides.,similarity:Belongs to the G-protein coupled receptor 1 family.,tissue





specificity: Expressed in greatest abundance in peripheral organs, particularly in elements of the gastrointestinal and urogenital systems with highest levels in testes. In central nervous system structures express levels are much lower than those seen in peripheral organs. Within the CNS, has been detected in highest abundance in the cerebellum, dorsal root ganglia, hippocampus, and spinal cord.,



Western Blot analysis of K562 cells using NMUR1 Polyclonal Antibody

Immunofluorescence analysis of LOVO cells, using NMUR1 Antibody. The picture on the right is blocked with the synthesized peptide.

