



SFRS14 rabbit pAb

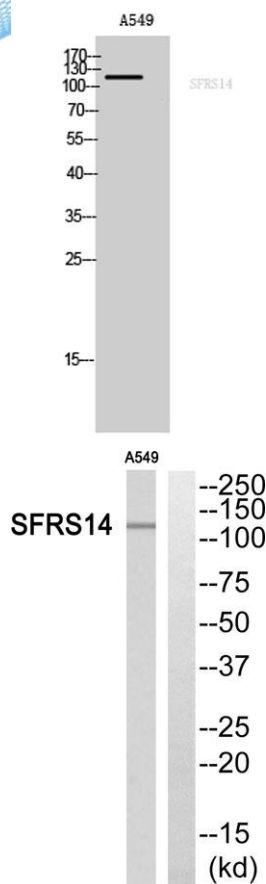
Cat No.:ES4429

For research use only

Overview

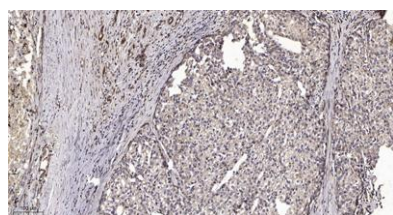
Product Name	SFRS14 rabbit pAb
Host species	Rabbit
Applications	WB;ELISA;IHC
Species Cross-Reactivity	Human;Rat;Mouse;
Recommended dilutions	WB 1:500-2000;IHC-p 1:50-300; ELISA 2000-20000
Immunogen	Synthesized peptide derived from SFRS14 . at AA range: 260-340
Specificity	SFRS14 Polyclonal Antibody detects endogenous levels of SFRS14 protein.
Formulation	Liquid in PBS containing 50% glycerol, 0.5% BSA and 0.02% sodium azide.
Storage	Store at -20°C. Avoid repeated freeze-thaw cycles.
Protein Name	SURP and G-patch domain-containing protein 2
Gene Name	SUGP2
Cellular localization	Nucleus .
Purification	The antibody was affinity-purified from rabbit antiserum by affinity-chromatography using epitope-specific immunogen.
Clonality	Polyclonal
Concentration	1 mg/ml
Observed band	120kD
Human Gene ID	10147
Human Swiss-Prot Number	Q8IX01
Alternative Names	SUGP2; KIAA0365; SFRS14; SURP and G-patch domain-containing protein 2; Arginine/serine-rich-splicing factor 14; Splicing factor; arginine/serine-rich 14
Background	This gene encodes a member of the arginine/serine-rich family of splicing factors. The encoded protein functions in mRNA processing. Alternatively spliced transcript variants have been described. [provided by RefSeq, Feb 2009],





Western Blot analysis of A549 cells using SFRS14 Polyclonal Antibody cells nucleus extracted by Minute TM Cytoplasmic and Nuclear Fractionation kit (SC-003, Inventbiotech, MN, USA).

Western blot analysis of SFRS14 Antibody. The lane on the right is blocked with the SFRS14 peptide.



Immunohistochemical analysis of paraffin-embedded human liver cancer. 1, Antibody was diluted at 1:200(4° overnight). 2, Tris-EDTA, pH9.0 was used for antigen retrieval. 3, Secondary antibody was diluted at 1:200(room temperature, 45min).

