



CD96 rabbit pAb

Cat No.:ES4328

For research use only

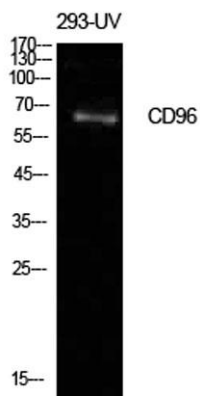
Overview

Product Name	CD96 rabbit pAb
Host species	Rabbit
Applications	WB;ELISA
Species Cross-Reactivity	Human;Rat;Mouse;
Recommended dilutions	Western Blot: 1/500 - 1/2000. ELISA: 1/10000. Not yet tested in other applications.
Immunogen	The antiserum was produced against synthesized peptide derived from the Internal region of human CD96. AA range:291-340
Specificity	CD96 Polyclonal Antibody detects endogenous levels of CD96 protein.
Formulation	Liquid in PBS containing 50% glycerol, 0.5% BSA and 0.02% sodium azide.
Storage	Store at -20°C. Avoid repeated freeze-thaw cycles.
Protein Name	T-cell surface protein tactile
Gene Name	CD96
Cellular localization	Membrane; Single-pass type I membrane protein.
Purification	The antibody was affinity-purified from rabbit antiserum by affinity-chromatography using epitope-specific immunogen.
Clonality	Polyclonal
Concentration	1 mg/ml
Observed band	65kD
Human Gene ID	10225
Human Swiss-Prot Number	P40200
Alternative Names	CD96; T-cell surface protein tactile; Cell surface antigen CD96; T cell-activated increased late expression protein; CD96
Background	The protein encoded by this gene belongs to the immunoglobulin superfamily. It is a type I membrane protein. The protein may play a role in the adhesive interactions of activated T and NK cells during the late phase of the immune response. It

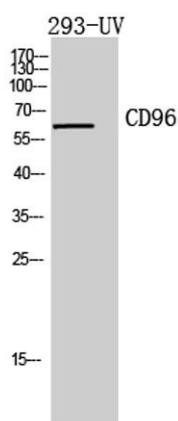




may also function in antigen presentation. Alternative splicing generates multiple transcript variants encoding distinct isoforms. [provided by RefSeq, Jan 2016],



Western Blot analysis of 293-UV cells using CD96 Polyclonal Antibody. Antibody was diluted at 1:500. Secondary antibody(catalog#:RS0002) was diluted at 1:20000



Western Blot analysis of 293-UV cells using CD96 Polyclonal Antibody diluted at 1:500. Secondary antibody(catalog#:RS0002) was diluted at 1:20000

