



# ALR rabbit pAb

Cat No.:ES4259

For research use only

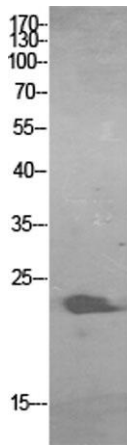
## Overview

<b>Product Name</b>	ALR rabbit pAb
<b>Host species</b>	Rabbit
<b>Applications</b>	WB;IHC;IF;ELISA
<b>Species Cross-Reactivity</b>	Human;Mouse;Rat
<b>Recommended dilutions</b>	Western Blot: 1/500 - 1/2000. IHC-p: 1:100-1:300. ELISA: 1/20000. Not yet tested in other applications.
<b>Immunogen</b>	The antiserum was produced against synthesized peptide derived from the Internal region of human GFER. AA range:51-100
<b>Specificity</b>	ALR Polyclonal Antibody detects endogenous levels of ALR protein.
<b>Formulation</b>	Liquid in PBS containing 50% glycerol, 0.5% BSA and 0.02% sodium azide.
<b>Storage</b>	Store at -20°C. Avoid repeated freeze-thaw cycles.
<b>Protein Name</b>	FAD-linked sulfhydryl oxidase ALR
<b>Gene Name</b>	GFER
<b>Cellular localization</b>	[Isoform 1]: Mitochondrion intermembrane space. Mitochondrion .; [Isoform 2]: Cytoplasm. Secreted.
<b>Purification</b>	The antibody was affinity-purified from rabbit antiserum by affinity-chromatography using epitope-specific immunogen.
<b>Clonality</b>	Polyclonal
<b>Concentration</b>	1 mg/ml
<b>Observed band</b>	24kD
<b>Human Gene ID</b>	2671
<b>Human Swiss-Prot Number</b>	P55789
<b>Alternative Names</b>	GFER; ALR; HERV1; HPO; FAD-linked sulfhydryl oxidase ALR; Augmenter of liver regeneration; hERV1; Hepatopoietin
<b>Background</b>	The hepatotrophic factor designated augmenter of liver regeneration (ALR) is thought to be one of the factors responsible for the extraordinary regenerative capacity of mammalian liver. It has also

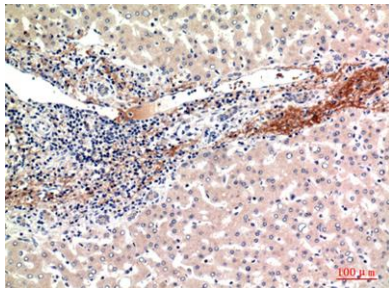




been called hepatic regenerative stimulation substance (HSS). The gene resides on chromosome 16 in the interval containing the locus for polycystic kidney disease (PKD1). The putative gene product is 42% similar to the scERV1 protein of yeast. The yeast scERV1 gene had been found to be essential for oxidative phosphorylation, the maintenance of mitochondrial genomes, and the cell division cycle. The human gene is both the structural and functional homolog of the yeast scERV1 gene. [provided by RefSeq, Jul 2008],



Western Blot analysis of HBE cells using ALR Polyclonal Antibody. Secondary antibody(catalog#:RS0002) was diluted at 1:20000



Immunohistochemical analysis of paraffin-embedded human-liver, antibody was diluted at 1:100

