

Neuropilin rabbit pAb

Cat No.:ES4182

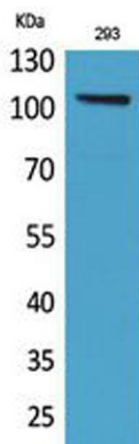
For research use only

Overview

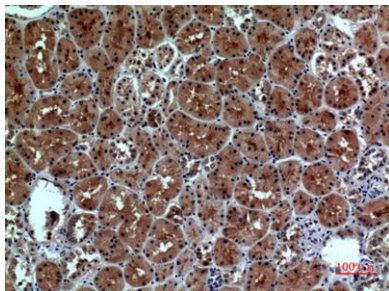
Product Name	Neuropilin rabbit pAb
Host species	Rabbit
Applications	WB;IHC;IF;ELISA
Species Cross-Reactivity	Human;Mouse;Rat
Recommended dilutions	Western Blot: 1/500 - 1/2000. IHC-p: 1/100-1/300. ELISA: 1/20000. Not yet tested in other applications.
Immunogen	The antiserum was produced against synthesized peptide derived from the Internal region of human NRP1. AA range:321-370
Specificity	Neuropilin Polyclonal Antibody detects endogenous levels of Neuropilin protein.
Formulation	Liquid in PBS containing 50% glycerol, 0.5% BSA and 0.02% sodium azide.
Storage	Store at -20°C. Avoid repeated freeze-thaw cycles.
Protein Name	Neuropilin-1
Gene Name	NRP1
Cellular localization	[Isoform 2]: Secreted .; Mitochondrion membrane ; Single-pass type I membrane protein . Cell membrane ; Single-pass type I membrane protein . Cytoplasm .
Purification	The antibody was affinity-purified from rabbit antiserum by affinity-chromatography using epitope-specific immunogen.
Clonality	Polyclonal
Concentration	1 mg/ml
Observed band	100kD
Human Gene ID	8829
Human Swiss-Prot Number	O14786
Alternative Names	NRP1; NRP; VEGF165R; Neuropilin-1; Vascular endothelial cell growth factor 165 receptor; CD304
Background	This gene encodes one of two neuropilins, which contain specific protein domains which allow them to participate in several different types of signaling



pathways that control cell migration. Neuropilins contain a large N-terminal extracellular domain, made up of complement-binding, coagulation factor V/VIII, and meprin domains. These proteins also contains a short membrane-spanning domain and a small cytoplasmic domain. Neuropilins bind many ligands and various types of co-receptors; they affect cell survival, migration, and attraction. Some of the ligands and co-receptors bound by neuropilins are vascular endothelial growth factor (VEGF) and semaphorin family members. Several alternatively spliced transcript variants that encode different protein isoforms have been described for this gene. [provided by RefSeq, Oct 2011],



Western Blot analysis of 293 cells using Neuropilin Polyclonal Antibody. Secondary antibody(catalog#:RS0002) was diluted at 1:20000



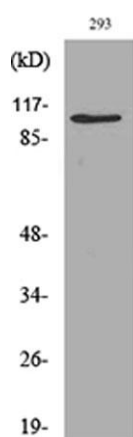
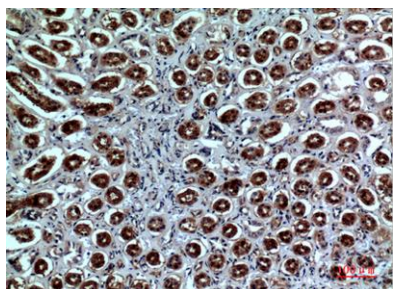
Immunohistochemical analysis of paraffin-embedded human-kidney, antibody was diluted at 1:100





ELK Biotechnology

Immunohistochemical analysis of paraffin-embedded human-kidney, antibody was diluted at 1:100



Western blot analysis of lysate from 293 cells, using NRP1 Antibody.



+86-27-59760950

ELKbio@ELKbiotech.com

www.elkbiotech.com

23-2, No.388 Gaoxin 2nd Road, Wuhan East Lake Hi-tech Development Zone, Hubei, P.R.C.