



## CD307 rabbit pAb

Cat No.:ES3998

For research use only

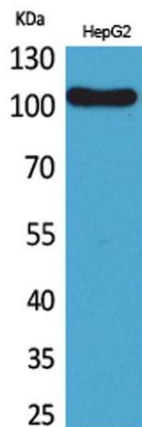
### Overview

---

<b>Product Name</b>	CD307 rabbit pAb
<b>Host species</b>	Rabbit
<b>Applications</b>	WB;IHC;IF;ELISA
<b>Species Cross-Reactivity</b>	Human;Rat;Mouse;
<b>Recommended dilutions</b>	Western Blot: 1/500 - 1/2000. IHC-p: 1:100-300 ELISA: 1/20000. Not yet tested in other applications.
<b>Immunogen</b>	The antiserum was produced against synthesized peptide derived from the Internal region of human FCRL5. AA range:191-240
<b>Specificity</b>	CD307 Polyclonal Antibody detects endogenous levels of CD307 protein.
<b>Formulation</b>	Liquid in PBS containing 50% glycerol, 0.5% BSA and 0.02% sodium azide.
<b>Storage</b>	Store at -20°C. Avoid repeated freeze-thaw cycles.
<b>Protein Name</b>	Fc receptor-like protein 5
<b>Gene Name</b>	FCRL5
<b>Cellular localization</b>	Cell membrane ; Single-pass type I membrane protein .
<b>Purification</b>	The antibody was affinity-purified from rabbit antiserum by affinity-chromatography using epitope-specific immunogen.
<b>Clonality</b>	Polyclonal
<b>Concentration</b>	1 mg/ml
<b>Observed band</b>	110kD
<b>Human Gene ID</b>	83416
<b>Human Swiss-Prot Number</b>	Q96RD9
<b>Alternative Names</b>	FCRL5; FCRH5; IRTA2; Fc receptor-like protein 5; FcR-like protein 5; FcRL5; BXMAS1; Fc receptor homolog 5; FcRH5; Immune receptor translocation-associated protein 2; CD307e
<b>Background</b>	This gene encodes a member of the immunoglobulin receptor superfamily and the Fc-receptor like family. This gene and several other

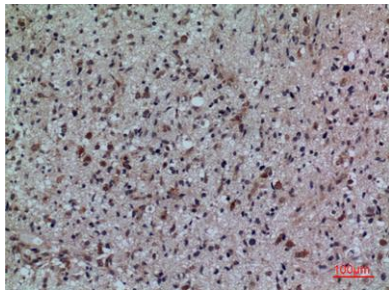


Fc receptor-like gene members are clustered on the long arm of chromosome 1. The encoded protein is a single-pass type I membrane protein and contains 8 immunoglobulin-like C2-type domains. This gene is implicated in B cell development and lymphomagenesis. Alternatively spliced transcript variants encoding different isoforms have been identified. [provided by RefSeq, Sep 2010],

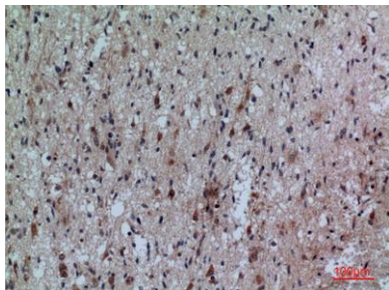


Western Blot analysis of HepG2 cells using CD307 Polyclonal Antibody. Secondary antibody(catalog#:RS0002) was diluted at 1:20000

Immunohistochemical analysis of paraffin-embedded human-brain, antibody was diluted at 1:100

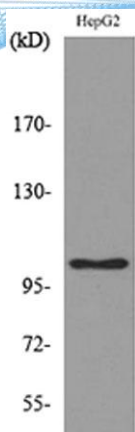


Immunohistochemical analysis of paraffin-embedded human-brain, antibody was diluted at 1:100





**ELK Biotechnology**



Western blot analysis of lysate from HepG2 cells, using FCRL5 Antibody.