

PSG1 rabbit pAb

Cat No.:ES3983

For research use only

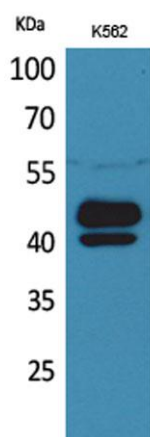
Overview

Product Name	PSG1 rabbit pAb
Host species	Rabbit
Applications	WB;IHC;IF;ELISA
Species Cross-Reactivity	Human;Rat;Mouse;
Recommended dilutions	Western Blot: 1/500 - 1/2000. IHC-p: 1:100-300 ELISA: 1/20000. Not yet tested in other applications.
Immunogen	The antiserum was produced against synthesized peptide derived from the Internal region of human PSG1. AA range:221-270
Specificity	PSG1 Polyclonal Antibody detects endogenous levels of PSG1 protein.
Formulation	Liquid in PBS containing 50% glycerol, 0.5% BSA and 0.02% sodium azide.
Storage	Store at -20°C. Avoid repeated freeze-thaw cycles.
Protein Name	Pregnancy-specific beta-1-glycoprotein 1
Gene Name	PSG1
Cellular localization	Secreted .
Purification	The antibody was affinity-purified from rabbit antiserum by affinity-chromatography using epitope-specific immunogen.
Clonality	Polyclonal
Concentration	1 mg/ml
Observed band	46kD
Human Gene ID	5669
Human Swiss-Prot Number	P11464
Alternative Names	PSG1; B1G1; PSBG1; PSGGA; Pregnancy-specific beta-1-glycoprotein 1; PS-beta-G-1; PSBG-1; Pregnancy-specific glycoprotein 1; CD66 antigen-like family member F;Fetal liver non-specific cross-reactive antigen 1/2; FL-NCA-1/2; PSG95; Pregnancy-specific beta-1
Background	The human placenta is a multihormonal endocrine organ that produces hormones, enzymes, and other

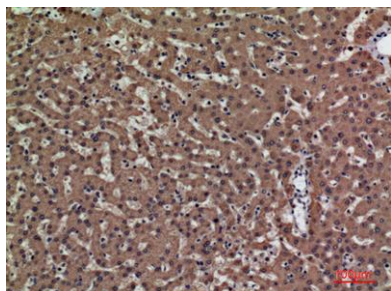




molecules that support fetal survival and development. Pregnancy-specific beta-1-glycoprotein (PSBG, PSG) is a major product of the syncytiotrophoblast, reaching concentrations of 100 to 290 mg/l at term in the serum of pregnant women (Horne et al., 1976 [PubMed 971765]). PSG is a member of the immunoglobulin (Ig) superfamily (Watanabe and Chou, 1988 [PubMed 3257488]; Streydio et al., 1988 [PubMed 3260773]).[supplied by OMIM, Oct 2009],



Western Blot analysis of K562 cells using PSG1 Polyclonal Antibody. Secondary antibody(catalog#:RS0002) was diluted at 1:20000



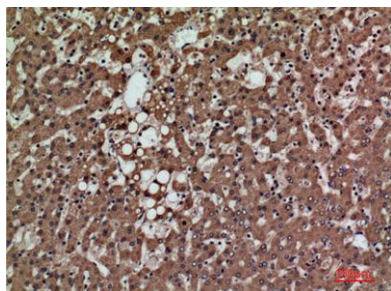
Immunohistochemical analysis of paraffin-embedded human-liver, antibody was diluted at 1:100





ELK Biotechnology

Immunohistochemical analysis of paraffin-embedded human-liver, antibody was diluted at 1:100



+86-27-59760950

ELKbio@ELKbiotech.com

www.elkbiotech.com

23-2, No.388 Gaoxin 2nd Road, Wuhan East Lake Hi-tech Development Zone, Hubei, P.R.C.