

# SPTLC1 rabbit pAb

Cat No.:ES3962

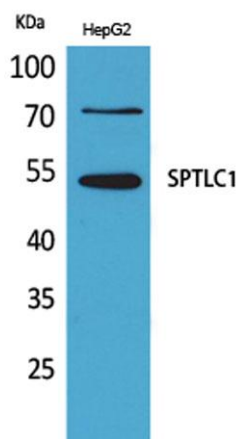
For research use only

## Overview

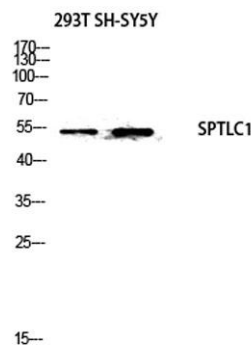
Product Name	SPTLC1 rabbit pAb
Host species	Rabbit
Applications	WB;IHC;IF;ELISA
Species Cross-Reactivity	Human;Mouse;Rat
Recommended dilutions	Western Blot: 1/500 - 1/2000. IHC-p: 1:100-300 ELISA: 1/20000. Not yet tested in other applications.
Immunogen	Synthesized peptide derived from SPTLC1 . at AA range: 411-460
Specificity	SPTLC1 Polyclonal Antibody detects endogenous levels of SPTLC1 protein.
Formulation	Liquid in PBS containing 50% glycerol, 0.5% BSA and 0.02% sodium azide.
Storage	Store at -20°C. Avoid repeated freeze-thaw cycles.
Protein Name	Serine palmitoyltransferase 1
Gene Name	SPTLC1
Cellular localization	Endoplasmic reticulum membrane ; Single-pass membrane protein .
Purification	The antibody was affinity-purified from rabbit antiserum by affinity-chromatography using epitope-specific immunogen.
Clonality	Polyclonal
Concentration	1 mg/ml
Observed band	52kD
Human Gene ID	10558
Human Swiss-Prot Number	O15269
Alternative Names	SPTLC1; LCB1; Serine palmitoyltransferase 1; Long chain base biosynthesis protein 1; LCB 1; Serine-palmitoyl-CoA transferase 1; SPT 1; SPT1
Background	This gene encodes a member of the class-II pyridoxal-phosphate-dependent aminotransferase family. The encoded protein is the long chain base subunit 1 of serine palmitoyltransferase. Serine palmitoyltransferase converts L-serine and



palmitoyl-CoA to 3-oxosphinganine with pyridoxal 5'-phosphate and is the key enzyme in sphingolipid biosynthesis. Mutations in this gene were identified in patients with hereditary sensory neuropathy type 1. Alternatively spliced variants encoding different isoforms have been identified. Pseudogenes of this gene have been defined on chromosomes 1, 6, 10, and 13. [provided by RefSeq, Jul 2013],

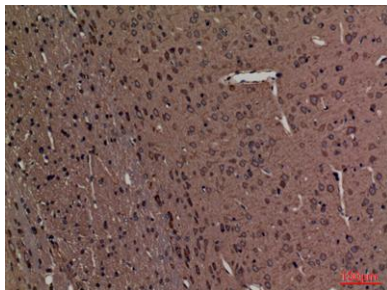


Western Blot analysis of HepG2 cells using SPTLC1 Polyclonal Antibody. Antibody was diluted at 1:500. Secondary antibody(catalog#:RS0002) was diluted at 1:20000



Western blot analysis of 293T SH-SY5Y cells using SPTLC1 antibody. Antibody was diluted at 1:500. Secondary antibody(catalog#:RS0002) was diluted at 1:20000

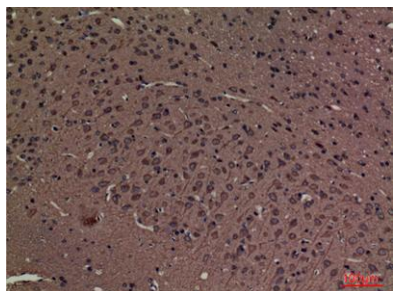
Immunohistochemical analysis of paraffin-embedded rat-brain, antibody was diluted at 1:100





**ELK Biotechnology**

Immunohistochemical analysis of paraffin-embedded  
rat-brain, antibody was diluted at 1:100



+86-27-59760950

[ELKbio@ELKbiotech.com](mailto:ELKbio@ELKbiotech.com)

[www.elkbiotech.com](http://www.elkbiotech.com)

23-2, No.388 Gaoxin 2nd Road, Wuhan East Lake Hi-tech Development Zone, Hubei, P.R.C.