



Kallistatin rabbit pAb

Cat No.:ES3946

For research use only

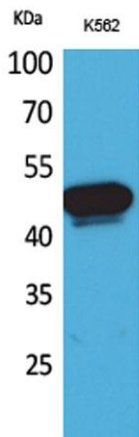
Overview

| | |
|---------------------------------|--|
| Product Name | Kallistatin rabbit pAb |
| Host species | Rabbit |
| Applications | WB;IHC;IF;ELISA |
| Species Cross-Reactivity | Human;Rat;Mouse; |
| Recommended dilutions | Western Blot: 1/500 - 1/2000. IHC-p: 1:100-300 ELISA: 1/20000. Not yet tested in other applications. |
| Immunogen | The antiserum was produced against synthesized peptide derived from the Internal region of human SERPINA4. AA range:161-210 |
| Specificity | Kallistatin Polyclonal Antibody detects endogenous levels of Kallistatin protein. |
| Formulation | Liquid in PBS containing 50% glycerol, 0.5% BSA and 0.02% sodium azide. |
| Storage | Store at -20°C. Avoid repeated freeze-thaw cycles. |
| Protein Name | Kallistatin |
| Gene Name | SERPINA4 |
| Cellular localization | Secreted. |
| Purification | The antibody was affinity-purified from rabbit antiserum by affinity-chromatography using epitope-specific immunogen. |
| Clonality | Polyclonal |
| Concentration | 1 mg/ml |
| Observed band | 47kD |
| Human Gene ID | 5267 |
| Human Swiss-Prot Number | P29622 |
| Alternative Names | SERPINA4; KST; PI4; Kallistatin; Kallikrein inhibitor; Peptidase inhibitor 4; PI-4; Serpin A4 |
| Background | function:Inhibits human amidolytic and kininogenase activities of tissue kallikrein. Inhibition is achieved by formation of an equimolar, heat- and SDS-stable complex between the inhibitor and the enzyme, and generation of a small C-terminal fragment of the inhibitor due to cleavage at the |



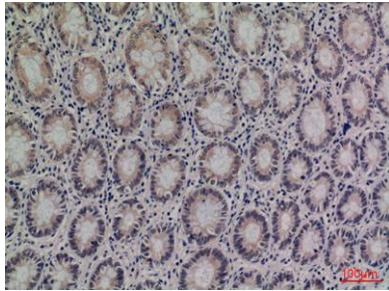


reactive site by tissue kallikrein.,miscellaneous:Heparin blocks kallistatin's complex formation with tissue kallikrein and abolishes its inhibitory effect on tissue kallikrein's activity.,PTM:The N-terminus is blocked.,similarity:Belongs to the serpin family.,subunit:Monomer and some homodimers.,tissue specificity:Expressed by the liver and secreted in plasma.,

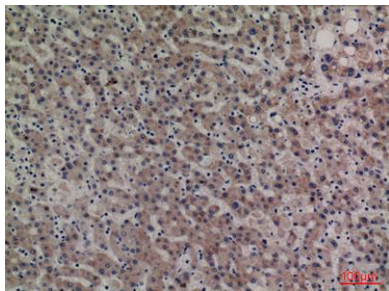


Western Blot analysis of K562 cells using Kallistatin Polyclonal Antibody. Secondary antibody(catalog#:RS0002) was diluted at 1:20000

Immunohistochemical analysis of paraffin-embedded human-colon, antibody was diluted at 1:100

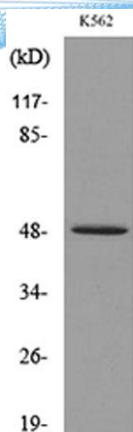


Immunohistochemical analysis of paraffin-embedded human-liver, antibody was diluted at 1:100





ELK Biotechnology



Western blot analysis of lysate from K562 cells, using SERPINA4 Antibody.



+86-27-59760950

ELKbio@ELKbiotech.com

www.elkbiotech.com

23-2, No.388 Gaoxin 2nd Road,Wuhan East Lake Hi-tech Development Zone, Hubei , P.R.C