

DNA Pol μ rabbit pAb

Cat No.:ES3835

For research use only

Overview

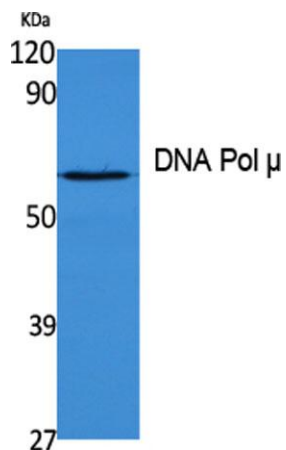
Product Name	DNA Pol μ rabbit pAb
Host species	Rabbit
Applications	WB;ELISA
Species Cross-Reactivity	Human;Rat;Mouse;
Recommended dilutions	Western Blot: 1/500 - 1/2000. ELISA: 1/40000. Not yet tested in other applications.
Immunogen	Synthesized peptide derived from DNA Pol μ . at AA range: 210-290
Specificity	DNA Pol μ Polyclonal Antibody detects endogenous levels of DNA Pol μ protein.
Formulation	Liquid in PBS containing 50% glycerol, 0.5% BSA and 0.02% sodium azide.
Storage	Store at -20°C. Avoid repeated freeze-thaw cycles.
Protein Name	DNA-directed DNA/RNA polymerase mu
Gene Name	POLM
Cellular localization	Nucleus .
Purification	The antibody was affinity-purified from rabbit antiserum by affinity-chromatography using epitope-specific immunogen.
Clonality	Polyclonal
Concentration	1 mg/ml
Observed band	54kD
Human Gene ID	27434
Human Swiss-Prot Number	Q9NP87
Alternative Names	POLM; polmu; DNA-directed DNA/RNA polymerase mu; Pol Mu; Terminal transferase catalytic activity:Deoxynucleoside triphosphate + DNA(n) = diphosphate + DNA(n+1).,cofactor:Magnesium.,function:Seems to act as an Ig mutase which is responsible for immunoglobulin (Ig) gene hypermutation.,similarity:Belongs to the DNA polymerase type-X family.,similarity:Contains 1 BRCT
Background	





ELK Biotechnology

domain.,tissue specificity:Expressed in a number of tissues. Abundant in thymus.,



Western Blot analysis of extracts from K562 cells, using DNA Pol μ Polyclonal Antibody. Secondary antibody(catalog#:RS0002) was diluted at 1:20000 cells nucleus extracted by Minute TM Cytoplasmic and Nuclear Fractionation kit (SC-003,Inventbiotech,MN,USA)



+86-27-59760950

ELKbio@ELKbiotech.com

www.elkbiotech.com

23-2, No.388 Gaoxin 2nd Road,Wuhan East Lake Hi-tech Development Zone, Hubei , P.R.C