



# SCML2 rabbit pAb

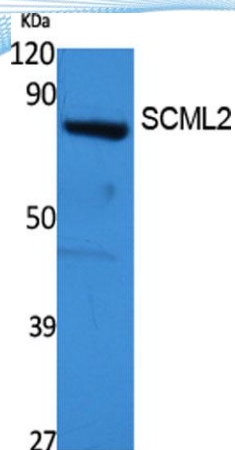
Cat No.:ES3831

For research use only

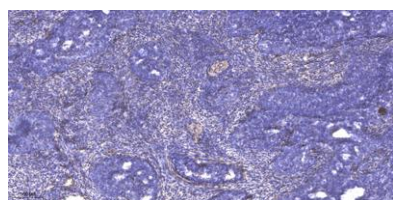
## Overview

<b>Product Name</b>	SCML2 rabbit pAb
<b>Host species</b>	Rabbit
<b>Applications</b>	WB; ELISA;IHC
<b>Species Cross-Reactivity</b>	Human;Rat;Mouse;
<b>Recommended dilutions</b>	WB 1:500-2000;IHC-p 1:50-300; ELISA 2000-20000
<b>Immunogen</b>	Synthesized peptide derived from the Internal region of human SCML2.
<b>Specificity</b>	SCML2 Polyclonal Antibody detects endogenous levels of SCML2 protein.
<b>Formulation</b>	Liquid in PBS containing 50% glycerol, 0.5% BSA and 0.02% sodium azide.
<b>Storage</b>	Store at -20°C. Avoid repeated freeze-thaw cycles.
<b>Protein Name</b>	Sex comb on midleg-like protein 2
<b>Gene Name</b>	SCML2
<b>Cellular localization</b>	Nucleus .
<b>Purification</b>	The antibody was affinity-purified from rabbit antiserum by affinity-chromatography using epitope-specific immunogen.
<b>Clonality</b>	Polyclonal
<b>Concentration</b>	1 mg/ml
<b>Observed band</b>	77kD
<b>Human Gene ID</b>	10389
<b>Human Swiss-Prot Number</b>	Q9UQR0
<b>Alternative Names</b>	SCML2; Sex comb on midleg-like protein 2
<b>Background</b>	This gene encodes a member of the Polycomb group proteins. These proteins form the Polycomb repressive complexes which are involved in transcriptional repression. The encoded protein binds histone peptides that are monomethylated at lysine residues and may be involved in regulating homeotic gene expression during development. [provided by RefSeq, Jun 2010],





Western Blot analysis of extracts from 293 cells, using SCML2 Polyclonal Antibody. Secondary antibody(catalog#:RS0002) was diluted at 1:20000 cells nucleus extracted by Minute TM Cytoplasmic and Nuclear Fractionation kit (SC-003, Inventbiotech, MN, USA).



Immunohistochemical analysis of paraffin-embedded human cervical carcinoma. 1, Antibody was diluted at 1:200(4° overnight). 2, Tris-EDTA, pH9.0 was used for antigen retrieval. 3, Secondary antibody was diluted at 1:200(room temperature, 45min).

