

ATP1AL1 rabbit pAb

Cat No.:ES3829

For research use only

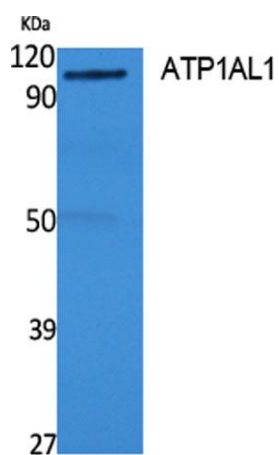
Overview

Product Name	ATP1AL1 rabbit pAb
Host species	Rabbit
Applications	WB;ELISA
Species Cross-Reactivity	Human;Rat
Recommended dilutions	Western Blot: 1/500 - 1/2000. ELISA: 1/20000. Not yet tested in other applications.
Immunogen	Synthesized peptide derived from ATP1AL1 . at AA range: 380-460
Specificity	ATP1AL1 Polyclonal Antibody detects endogenous levels of ATP1AL1 protein.
Formulation	Liquid in PBS containing 50% glycerol, 0.5% BSA and 0.02% sodium azide.
Storage	Store at -20°C. Avoid repeated freeze-thaw cycles.
Protein Name	Potassium-transporting ATPase alpha chain 2
Gene Name	ATP12A
Cellular localization	Apical cell membrane ; Multi-pass membrane protein .
Purification	The antibody was affinity-purified from rabbit antiserum by affinity-chromatography using epitope-specific immunogen.
Clonality	Polyclonal
Concentration	1 mg/ml
Observed band	115kD
Human Gene ID	479
Human Swiss-Prot Number	P54707
Alternative Names	ATP12A; ATP1AL1; Potassium-transporting ATPase alpha chain 2; Non-gastric H(+)/K(+) ATPase subunit alpha; Proton pump
Background	The protein encoded by this gene belongs to the family of P-type cation transport ATPases. This gene encodes a catalytic subunit of the ouabain-sensitive H ⁺ /K ⁺ -ATPase that catalyzes the hydrolysis of ATP coupled with the exchange of H(+) and K(+) ions





across the plasma membrane. It is also responsible for potassium absorption in various tissues. Two transcript variants encoding different isoforms have been found for this gene. [provided by RefSeq, Jun 2010],



Western Blot analysis of extracts from rat stomach, using ATP1AL1 Polyclonal Antibody. Secondary antibody(catalog#:RS0002) was diluted at 1:20000

