

Nup88 rabbit pAb

Cat No.:ES3803

For research use only

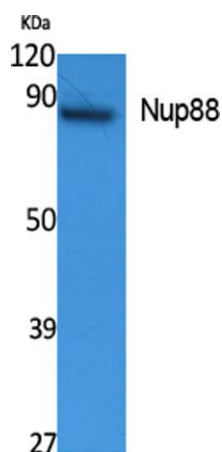
Overview

Product Name	Nup88 rabbit pAb
Host species	Rabbit
Applications	WB;ELISA
Species Cross-Reactivity	Human;Mouse
Recommended dilutions	Western Blot: 1/500 - 1/2000. ELISA: 1/20000. Not yet tested in other applications.
Immunogen	Synthesized peptide derived from Nup88 . at AA range: 330-410
Specificity	Nup88 Polyclonal Antibody detects endogenous levels of Nup88 protein.
Formulation	Liquid in PBS containing 50% glycerol, 0.5% BSA and 0.02% sodium azide.
Storage	Store at -20°C. Avoid repeated freeze-thaw cycles.
Protein Name	Nuclear pore complex protein Nup88
Gene Name	NUP88
Cellular localization	Nucleus, nuclear pore complex .
Purification	The antibody was affinity-purified from rabbit antiserum by affinity-chromatography using epitope-specific immunogen.
Clonality	Polyclonal
Concentration	1 mg/ml
Observed band	83kD
Human Gene ID	4927
Human Swiss-Prot Number	Q99567
Alternative Names	NUP88; Nuclear pore complex protein Nup88; 88 kDa nucleoporin; Nucleoporin Nup88
Background	<p>The nuclear pore complex is a massive structure that extends across the nuclear envelope, forming a gateway that regulates the flow of macromolecules between the nucleus and the cytoplasm.</p> <p>Nucleoporins, a family of 50 to 100 proteins, are the main components of the nuclear pore complex in eukaryotic cells. The protein encoded by this gene</p>





belongs to the nucleoporin family and is associated with the oncogenic nucleoporin CAN/Nup214 in a dynamic subcomplex. This protein is also overexpressed in a large number of malignant neoplasms and precancerous dysplasias. Alternative splicing results in multiple transcript variants encoding different isoforms. [provided by RefSeq, Mar 2016],



Western Blot analysis of extracts from K562 cells, using Nup88 Polyclonal Antibody. Secondary antibody(catalog#:RS0002) was diluted at 1:20000

