

# DNA pol $\epsilon$ B rabbit pAb

Cat No.:ES3795

For research use only

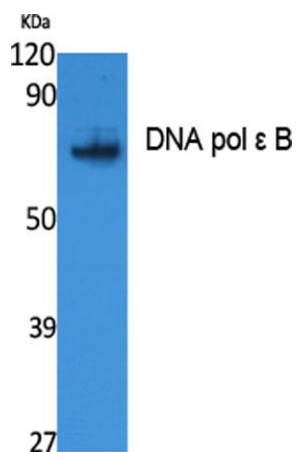
## Overview

Product Name	DNA pol $\epsilon$ B rabbit pAb
Host species	Rabbit
Applications	WB;ELISA
Species Cross-Reactivity	Human;Rat;Mouse;
Recommended dilutions	Western Blot: 1/500 - 1/2000. ELISA: 1/40000. Not yet tested in other applications.
Immunogen	Synthesized peptide derived from the Internal region of human DNA pol $\epsilon$ B.
Specificity	DNA pol $\epsilon$ B Polyclonal Antibody detects endogenous levels of DNA pol $\epsilon$ B protein.
Formulation	Liquid in PBS containing 50% glycerol, 0.5% BSA and 0.02% sodium azide.
Storage	Store at -20°C. Avoid repeated freeze-thaw cycles.
Protein Name	DNA polymerase epsilon subunit 2
Gene Name	POLE2
Cellular localization	Nucleus.
Purification	The antibody was affinity-purified from rabbit antiserum by affinity-chromatography using epitope-specific immunogen.
Clonality	Polyclonal
Concentration	1 mg/ml
Observed band	59kD
Human Gene ID	5427
Human Swiss-Prot Number	P56282
Alternative Names	POLE2; DPE2; DNA polymerase epsilon subunit 2; DNA polymerase II subunit 2; DNA polymerase epsilon subunit B
Background	catalytic activity:Deoxynucleoside triphosphate + DNA(n) = diphosphate + DNA(n+1).,function:Participates in DNA repair and in chromosomal DNA replication.,miscellaneous:In eukaryotes there are five DNA polymerases: alpha, beta, gamma, delta, and epsilon which are





responsible for different reactions of DNA synthesis.,similarity:Belongs to the DNA polymerase epsilon subunit B family.,subunit:Consists of four subunits: POLE, POLE2, POLE3 and POLE4.,



Western Blot analysis of extracts from Jurkat cells, using DNA pol ε B Polyclonal Antibody. Secondary antibody(catalog#:RS0002) was diluted at 1:20000 cells nucleus extracted by Minute TM Cytoplasmic and Nuclear Fractionation kit (SC-003,Inventbiotech,MN,

