



# A1BG rabbit pAb

Cat No.:ES3787

For research use only

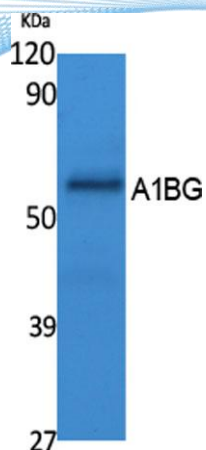
## Overview

<b>Product Name</b>	A1BG rabbit pAb
<b>Host species</b>	Rabbit
<b>Applications</b>	WB;IHC;IF;ELISA
<b>Species Cross-Reactivity</b>	Human;Rat;Mouse;
<b>Recommended dilutions</b>	Western Blot: 1/500 - 1/2000. IHC-p: 1:100-300 ELISA: 1/40000. Not yet tested in other applications.
<b>Immunogen</b>	Synthesized peptide derived from A1BG . at AA range: 100-180
<b>Specificity</b>	A1BG Polyclonal Antibody detects endogenous levels of A1BG protein.
<b>Formulation</b>	Liquid in PBS containing 50% glycerol, 0.5% BSA and 0.02% sodium azide.
<b>Storage</b>	Store at -20°C. Avoid repeated freeze-thaw cycles.
<b>Protein Name</b>	Alpha-1B-glycoprotein
<b>Gene Name</b>	A1BG
<b>Cellular localization</b>	Secreted.
<b>Purification</b>	The antibody was affinity-purified from rabbit antiserum by affinity-chromatography using epitope-specific immunogen.
<b>Clonality</b>	Polyclonal
<b>Concentration</b>	1 mg/ml
<b>Observed band</b>	28kD
<b>Human Gene ID</b>	1
<b>Human Swiss-Prot Number</b>	P04217
<b>Alternative Names</b>	A1BG; Alpha-1B-glycoprotein; Alpha-1-B glycoprotein
<b>Background</b>	The protein encoded by this gene is a plasma glycoprotein of unknown function. The protein shows sequence similarity to the variable regions of some immunoglobulin supergene family member proteins. [provided by RefSeq, Jul 2008],



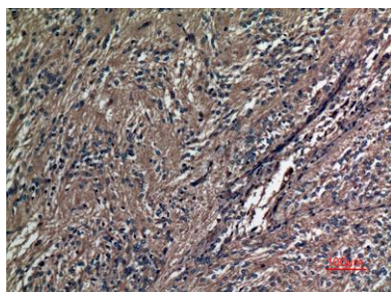


**ELK Biotechnology**

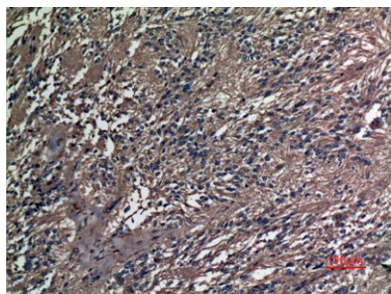


Western Blot analysis of extracts from K562 cells, using A1BG Polyclonal Antibody. Secondary antibody(catalog#:RS0002) was diluted at 1:20000

Immunohistochemical analysis of paraffin-embedded human-ovary, antibody was diluted at 1:100



Immunohistochemical analysis of paraffin-embedded human-ovary, antibody was diluted at 1:100



+86-27-59760950

[ELKbio@ELKbiotech.com](mailto:ELKbio@ELKbiotech.com)

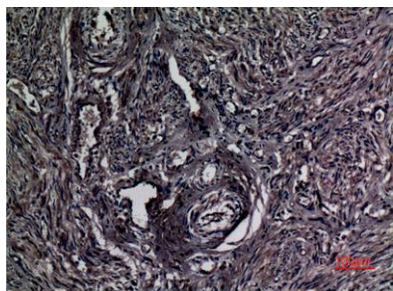
[www.elkbiotech.com](http://www.elkbiotech.com)

23-2, No.388 Gaoxin 2nd Road,Wuhan East Lake Hi-tech Development Zone, Hubei , P.R.C



**ELK Biotechnology**

Immunohistochemical analysis of paraffin-embedded human-uterus, antibody was diluted at 1:100



+86-27-59760950

[ELKbio@ELKbiotech.com](mailto:ELKbio@ELKbiotech.com)

[www.elkbiotech.com](http://www.elkbiotech.com)

23-2, No.388 Gaoxin 2nd Road,Wuhan East Lake Hi-tech Development Zone, Hubei , P.R.C