



# CHD1L rabbit pAb

Cat No.:ES3757

For research use only

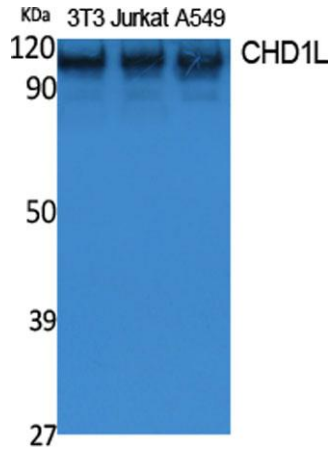
## Overview

<b>Product Name</b>	CHD1L rabbit pAb
<b>Host species</b>	Rabbit
<b>Applications</b>	WB;ELISA
<b>Species Cross-Reactivity</b>	Human;Mouse
<b>Recommended dilutions</b>	Western Blot: 1/500 - 1/2000. ELISA: 1/20000. Not yet tested in other applications.
<b>Immunogen</b>	The antiserum was produced against synthesized peptide derived from human CHD1L. AA range:545-594
<b>Specificity</b>	CHD1L Polyclonal Antibody detects endogenous levels of CHD1L protein.
<b>Formulation</b>	Liquid in PBS containing 50% glycerol, 0.5% BSA and 0.02% sodium azide.
<b>Storage</b>	Store at -20°C. Avoid repeated freeze-thaw cycles.
<b>Protein Name</b>	Chromodomain-helicase-DNA-binding protein 1-like
<b>Gene Name</b>	CHD1L
<b>Cellular localization</b>	Nucleus . Localizes at sites of DNA damage. Probably recruited to DNA damage sites by PARylated PARP1. .
<b>Purification</b>	The antibody was affinity-purified from rabbit antiserum by affinity-chromatography using epitope-specific immunogen.
<b>Clonality</b>	Polyclonal
<b>Concentration</b>	1 mg/ml
<b>Observed band</b>	101kD
<b>Human Gene ID</b>	9557
<b>Human Swiss-Prot Number</b>	Q86WJ1
<b>Alternative Names</b>	CHD1L; ALC1; Chromodomain-helicase-DNA-binding protein 1-like; Amplified in liver cancer protein 1 chromodomain helicase DNA binding protein 1 like(CHD1L) Homo sapiens
<b>Background</b>	This gene encodes a DNA helicase protein involved in DNA repair. The protein converts ATP to add poly(ADP-ribose) as it

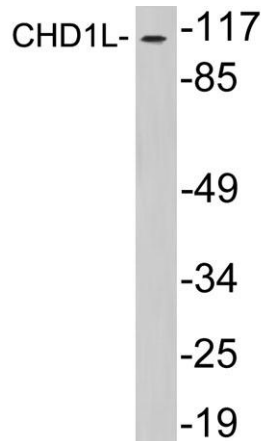




regulates chromatin relaxation following DNA damage. Several alternatively spliced transcripts variants have been described for this gene. [provided by RefSeq, Jan 2012],



Western Blot analysis of extracts from NIH-3T3, Jurkat, A549 cells, using CHD1L Polyclonal Antibody. Secondary antibody(catalog#:RS0002) was diluted at 1:20000 cells nucleus extracted by Minute TM Cytoplasmic and Nuclear Fractionation kit (SC-003, Inventbi



Western blot analysis of lysates from HepG2 cells, using CHD1L antibody.

