



# ZNF682 rabbit pAb

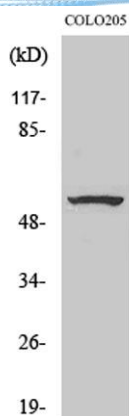
Cat No.:ES3741

For research use only

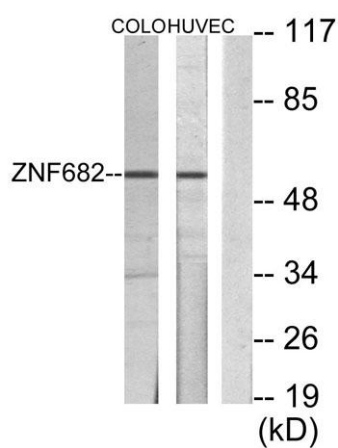
## Overview

|                                 |   |
|---------------------------------|---|
| <b>Product Name</b>             | ZNF682 rabbit pAb   |
| <b>Host species</b>             | Rabbit  |
| <b>Applications</b>             | WB;ELISA  |
| <b>Species Cross-Reactivity</b> | Human;Rat;Mouse;  |
| <b>Recommended dilutions</b>    | Western Blot: 1/500 - 1/2000. ELISA: 1/20000. Not yet tested in other applications.   |
| <b>Immunogen</b>                | The antiserum was produced against synthesized peptide derived from human ZNF682. AA range:21-70  |
| <b>Specificity</b>              | ZNF682 Polyclonal Antibody detects endogenous levels of ZNF682 protein.   |
| <b>Formulation</b>              | Liquid in PBS containing 50% glycerol, 0.5% BSA and 0.02% sodium azide.   |
| <b>Storage</b>                  | Store at -20°C. Avoid repeated freeze-thaw cycles.  |
| <b>Protein Name</b>             | Zinc finger protein 682   |
| <b>Gene Name</b>                | ZNF682  |
| <b>Cellular localization</b>    | Nucleus .   |
| <b>Purification</b>             | The antibody was affinity-purified from rabbit antiserum by affinity-chromatography using epitope-specific immunogen.   |
| <b>Clonality</b>                | Polyclonal  |
| <b>Concentration</b>            | 1 mg/ml   |
| <b>Observed band</b>            | 58kD  |
| <b>Human Gene ID</b>            | 91120   |
| <b>Human Swiss-Prot Number</b>  | O95780  |
| <b>Alternative Names</b>        | ZNF682; Zinc finger protein 682   |
| <b>Background</b>               | function:May be involved in transcriptional regulation.,similarity:Belongs to the krueppel C2H2-type zinc-finger protein family.,similarity:Contains 1 KRAB domain.,similarity:Contains 11 C2H2-type zinc fingers., |





Western Blot analysis of various cells using ZNF682 Polyclonal Antibody. Secondary antibody(catalog#:RS0002) was diluted at 1:20000 cells nucleus extracted by Minute TM Cytoplasmic and Nuclear Fractionation kit (SC-003, Inventbiotech, MN, USA).



Western blot analysis of lysates from COLO205 and HUVEC cells, using ZNF682 Antibody. The lane on the right is blocked with the synthesized peptide.

