



# ZC3H11A rabbit pAb

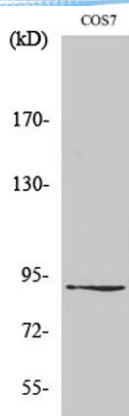
Cat No.:ES3726

For research use only

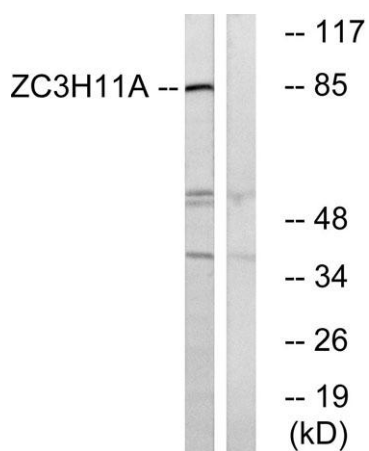
## Overview

<b>Product Name</b>	ZC3H11A rabbit pAb
<b>Host species</b>	Rabbit
<b>Applications</b>	WB;ELISA
<b>Species Cross-Reactivity</b>	Human;Monkey
<b>Recommended dilutions</b>	Western Blot: 1/500 - 1/2000. ELISA: 1/20000. Not yet tested in other applications.
<b>Immunogen</b>	The antiserum was produced against synthesized peptide derived from human ZC3H11A. AA range:291-340
<b>Specificity</b>	ZC3H11A Polyclonal Antibody detects endogenous levels of ZC3H11A protein.
<b>Formulation</b>	Liquid in PBS containing 50% glycerol, 0.5% BSA and 0.02% sodium azide.
<b>Storage</b>	Store at -20°C. Avoid repeated freeze-thaw cycles.
<b>Protein Name</b>	Zinc finger CCCH domain-containing protein 11A
<b>Gene Name</b>	ZC3H11A
<b>Cellular localization</b>	Nucleus .
<b>Purification</b>	The antibody was affinity-purified from rabbit antiserum by affinity-chromatography using epitope-specific immunogen.
<b>Clonality</b>	Polyclonal
<b>Concentration</b>	1 mg/ml
<b>Observed band</b>	110kD
<b>Human Gene ID</b>	9877
<b>Human Swiss-Prot Number</b>	O75152
<b>Alternative Names</b>	ZC3H11A; KIAA0663; ZC3HDC11A; Zinc finger CCCH domain-containing protein 11A
<b>Background</b>	PTM:Phosphorylated upon DNA damage, probably by ATM or ATR.,sequence caution:Contaminating sequence. Potential poly-A sequence.,similarity:Contains 3 C3H1-type zinc fingers.,





Western Blot analysis of various cells using ZC3H11A Polyclonal Antibody diluted at 1:1000. Secondary antibody(catalog#:RS0002) was diluted at 1:20000



Western blot analysis of lysates from COS cells, using ZC3H11A Antibody. The lane on the right is blocked with the synthesized peptide.

