



XPA rabbit pAb

Cat No.:ES3710

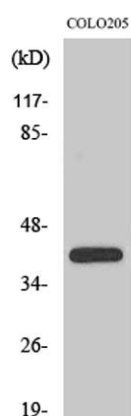
For research use only

Overview

Product Name	XPA rabbit pAb
Host species	Rabbit
Applications	WB;IHC;IF;ELISA
Species Cross-Reactivity	Human;Mouse
Recommended dilutions	Western Blot: 1/500 - 1/2000. Immunohistochemistry: 1/100 - 1/300. ELISA: 1/10000. Not yet tested in other applications.
Immunogen	The antiserum was produced against synthesized peptide derived from human XPA. AA range:211-260
Specificity	XPA Polyclonal Antibody detects endogenous levels of XPA protein.
Formulation	Liquid in PBS containing 50% glycerol, 0.5% BSA and 0.02% sodium azide.
Storage	Store at -20°C. Avoid repeated freeze-thaw cycles.
Protein Name	DNA repair protein complementing XP-A cells
Gene Name	XPA
Cellular localization	Nucleus .
Purification	The antibody was affinity-purified from rabbit antiserum by affinity-chromatography using epitope-specific immunogen.
Clonality	Polyclonal
Concentration	1 mg/ml
Observed band	40kD
Human Gene ID	7507
Human Swiss-Prot Number	P23025
Alternative Names	XPA; XPAC; DNA repair protein complementing XP-A cells; Xeroderma pigmentosum group A-complementing protein
Background	This gene encodes a zinc finger protein involved in DNA excision repair. The encoded protein is part of the NER (nucleotide excision repair) complex which is responsible for repair of UV radiation-induced photoproducts and DNA adducts induced by

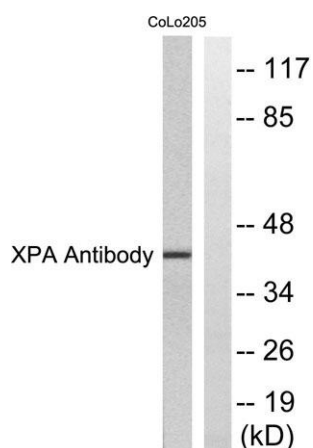
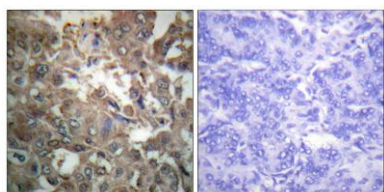


chemical carcinogens. Mutations in this gene are associated with xeroderma pigmentosum complementation group A. Alternatively spliced transcript variants have been found for this gene. [provided by RefSeq, Mar 2009],



Western Blot analysis of various cells using XPA Polyclonal Antibody diluted at 1:500. Secondary antibody(catalog#:RS0002) was diluted at 1:20000 cells nucleus extracted by Minute TM Cytoplasmic and Nuclear Fractionation kit (SC-003, Inventbiotech, MN, USA).

Immunohistochemistry analysis of paraffin-embedded human breast carcinoma tissue, using XPA Antibody. The picture on the right is blocked with the synthesized peptide.



Western blot analysis of lysates from COLO205 cells, using XPA Antibody. The lane on the right is blocked with the synthesized peptide.

