



V1RL2 rabbit pAb

Cat No.:ES3683

For research use only

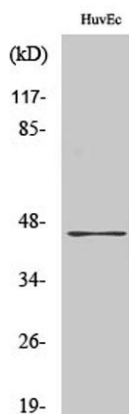
Overview

Product Name	V1RL2 rabbit pAb
Host species	Rabbit
Applications	WB;IF;ELISA
Species Cross-Reactivity	Human;Rat;Mouse;
Recommended dilutions	Western Blot: 1/500 - 1/2000. Immunofluorescence: 1/200 - 1/1000. ELISA: 1/40000. Not yet tested in other applications.
Immunogen	The antiserum was produced against synthesized peptide derived from human VN1R2. AA range:88-137
Specificity	V1RL2 Polyclonal Antibody detects endogenous levels of V1RL2 protein.
Formulation	Liquid in PBS containing 50% glycerol, 0.5% BSA and 0.02% sodium azide.
Storage	Store at -20°C. Avoid repeated freeze-thaw cycles.
Protein Name	Vomer nasal type-1 receptor 2
Gene Name	VN1R2
Cellular localization	Cell membrane; Multi-pass membrane protein.
Purification	The antibody was affinity-purified from rabbit antiserum by affinity-chromatography using epitope-specific immunogen.
Clonality	Polyclonal
Concentration	1 mg/ml
Observed band	46kD
Human Gene ID	317701
Human Swiss-Prot Number	Q8NFZ6
Alternative Names	VN1R2; V1RL2; Vomer nasal type-1 receptor 2; G-protein coupled receptor GPCR25; hGPCR25; V1r-like receptor 2
Background	function:Putative pheromone receptor.,miscellaneous:The chimpanzee, gorilla and orangutan orthologous proteins do not exist, their genes are pseudogenes.,online information:No one

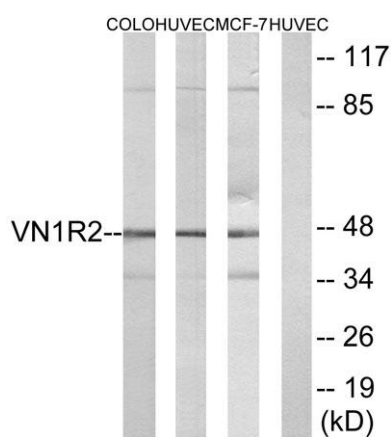




nose - Issue 61 of August 2005, similarity: Belongs to the G-protein coupled receptor 1 family.,



Western Blot analysis of various cells using V1RL2 Polyclonal Antibody. Secondary antibody(catalog#:RS0002) was diluted at 1:20000



Western blot analysis of lysates from HUVEC, COLO, and MCF-7 cells, using VN1R2 Antibody. The lane on the right is blocked with the synthesized peptide.

