



# USP50 rabbit pAb

Cat No.:ES3681

For research use only

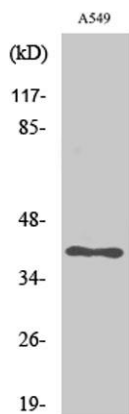
## Overview

<b>Product Name</b>	USP50 rabbit pAb
<b>Host species</b>	Rabbit
<b>Applications</b>	WB;IHC;IF;ELISA
<b>Species Cross-Reactivity</b>	Human;Mouse
<b>Recommended dilutions</b>	Western Blot: 1/500 - 1/2000. Immunohistochemistry: 1/100 - 1/300. ELISA: 1/20000. Not yet tested in other applications.
<b>Immunogen</b>	The antiserum was produced against synthesized peptide derived from human USP50. AA range:251-300
<b>Specificity</b>	USP50 Polyclonal Antibody detects endogenous levels of USP50 protein.
<b>Formulation</b>	Liquid in PBS containing 50% glycerol, 0.5% BSA and 0.02% sodium azide.
<b>Storage</b>	Store at -20°C. Avoid repeated freeze-thaw cycles.
<b>Protein Name</b>	Inactive ubiquitin carboxyl-terminal hydrolase 50
<b>Gene Name</b>	USP50
<b>Cellular localization</b>	
<b>Purification</b>	The antibody was affinity-purified from rabbit antiserum by affinity-chromatography using epitope-specific immunogen.
<b>Clonality</b>	Polyclonal
<b>Concentration</b>	1 mg/ml
<b>Observed band</b>	38kD
<b>Human Gene ID</b>	373509
<b>Human Swiss-Prot Number</b>	Q70EL3
<b>Alternative Names</b>	USP50; Inactive ubiquitin carboxyl-terminal hydrolase 50; Inactive ubiquitin-specific peptidase 50
<b>Background</b>	caution:Although the active site residues are conserved, lacks the conserved Asp/Asn residue which is normally found 7-9 residues after the catalytic His.,function:Has no peptidase





activity, similarity: Belongs to the peptidase C19 family, tissue specificity: Weakly expressed in a few tissues.,



Western Blot analysis of various cells using USP50 Polyclonal Antibody. Secondary antibody (catalog#: RS0002) was diluted at 1:20000

Immunohistochemistry analysis of paraffin-embedded human lung carcinoma tissue, using USP50 Antibody. The picture on the right is blocked with the synthesized peptide.

