



# TMPRSS3 rabbit pAb

Cat No.:ES3619

For research use only

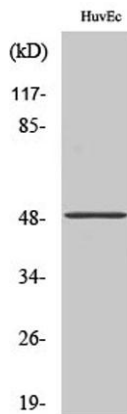
## Overview

<b>Product Name</b>	TMPRSS3 rabbit pAb
<b>Host species</b>	Rabbit
<b>Applications</b>	WB;IHC;IF;ELISA
<b>Species Cross-Reactivity</b>	Human;Mouse
<b>Recommended dilutions</b>	Western Blot: 1/500 - 1/2000. Immunohistochemistry: 1/100 - 1/300. Immunofluorescence: 1/200 - 1/1000. ELISA: 1/10000. Not yet tested in other applications.
<b>Immunogen</b>	The antiserum was produced against synthesized peptide derived from human TMPRSS3. AA range:405-454
<b>Specificity</b>	TMPRSS3 Polyclonal Antibody detects endogenous levels of TMPRSS3 protein.
<b>Formulation</b>	Liquid in PBS containing 50% glycerol, 0.5% BSA and 0.02% sodium azide.
<b>Storage</b>	Store at -20°C. Avoid repeated freeze-thaw cycles.
<b>Protein Name</b>	Transmembrane protease serine 3
<b>Gene Name</b>	TMPRSS3
<b>Cellular localization</b>	Endoplasmic reticulum membrane ; Single-pass type II membrane protein .
<b>Purification</b>	The antibody was affinity-purified from rabbit antiserum by affinity-chromatography using epitope-specific immunogen.
<b>Clonality</b>	Polyclonal
<b>Concentration</b>	1 mg/ml
<b>Observed band</b>	49kD
<b>Human Gene ID</b>	64699
<b>Human Swiss-Prot Number</b>	P57727
<b>Alternative Names</b>	TMPRSS3; ECHOS1; TADG12; Transmembrane protease serine 3; Serine protease TADG-12; Tumor-associated differentially-expressed gene 12 protein
<b>Background</b>	This gene encodes a protein that belongs to the



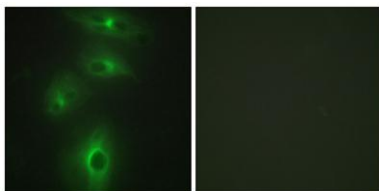


serine protease family. The encoded protein contains a serine protease domain, a transmembrane domain, an LDL receptor-like domain, and a scavenger receptor cysteine-rich domain. Serine proteases are known to be involved in a variety of biological processes, whose malfunction often leads to human diseases and disorders. This gene was identified by its association with both congenital and childhood onset autosomal recessive deafness. This gene is expressed in fetal cochlea and many other tissues, and is thought to be involved in the development and maintenance of the inner ear or the contents of the perilymph and endolymph. This gene was also identified as a tumor-associated gene that is overexpressed in ovarian tumors. Alternatively spliced transcript variants have been described. [provided by RefSeq, Jan 2012],



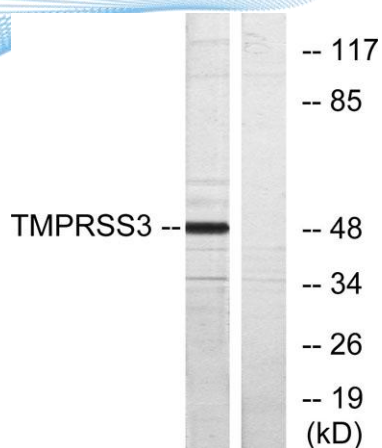
Western Blot analysis of various cells using TMPRSS3 Polyclonal Antibody. Secondary antibody(catalog#:RS0002) was diluted at 1:20000

Immunofluorescence analysis of HeLa cells, using TMPRSS3 Antibody. The picture on the right is blocked with the synthesized peptide.

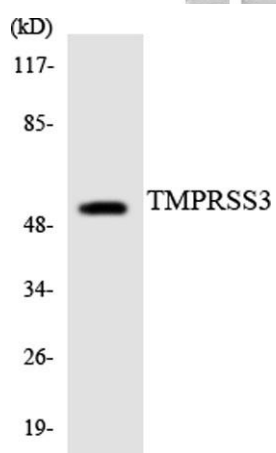




**ELK Biotechnology**



Western blot analysis of lysates from HUVEC cells, using TMPRSS3 Antibody. The lane on the right is blocked with the synthesized peptide.



Western blot analysis of the lysates from HT-29 cells using TMPRSS3 antibody.



+86-27-59760950

[ELKbio@ELKbiotech.com](mailto:ELKbio@ELKbiotech.com)

[www.elkbiotech.com](http://www.elkbiotech.com)

23-2, No.388 Gaoxin 2nd Road, Wuhan East Lake Hi-tech Development Zone, Hubei, P.R.C