



THAP4 rabbit pAb

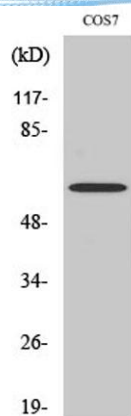
Cat No.:ES3603

For research use only

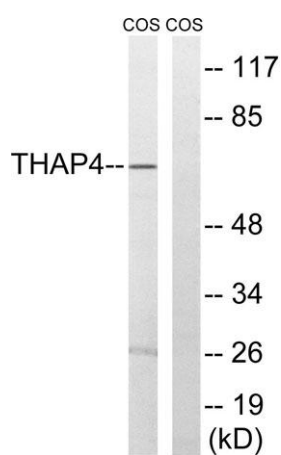
Overview

Product Name	THAP4 rabbit pAb
Host species	Rabbit
Applications	WB;IHC;IF;ELISA
Species Cross-Reactivity	Human;Mouse;Rat;Monkey
Recommended dilutions	Western Blot: 1/500 - 1/2000. Immunohistochemistry: 1/100 - 1/300. ELISA: 1/40000. Not yet tested in other applications.
Immunogen	The antiserum was produced against synthesized peptide derived from human THAP4. AA range:341-390
Specificity	THAP4 Polyclonal Antibody detects endogenous levels of THAP4 protein.
Formulation	Liquid in PBS containing 50% glycerol, 0.5% BSA and 0.02% sodium azide.
Storage	Store at -20°C. Avoid repeated freeze-thaw cycles.
Protein Name	THAP domain-containing protein 4
Gene Name	THAP4
Cellular localization	Cytoplasm. Nucleus. Localizes mainly in the cytoplasm and partially in the nucleus. .
Purification	The antibody was affinity-purified from rabbit antiserum by affinity-chromatography using epitope-specific immunogen.
Clonality	Polyclonal
Concentration	1 mg/ml
Observed band	63kD
Human Gene ID	51078
Human Swiss-Prot Number	Q8WY91
Alternative Names	THAP4; CGI-36; PP238; THAP domain-containing protein 4
Background	PTM:Phosphorylated upon DNA damage, probably by ATM or ATR.,similarity:Contains 1 THAP-type zinc finger.,

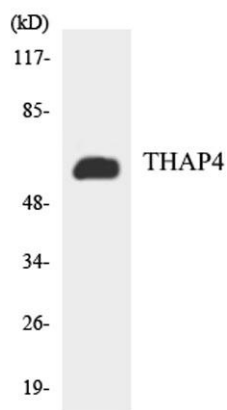




Western Blot analysis of various cells using THAP4
Polyclonal Antibody



Western blot analysis of lysates from COS7 cells, using
THAP4 Antibody. The lane on the right is blocked with the
synthesized peptide.

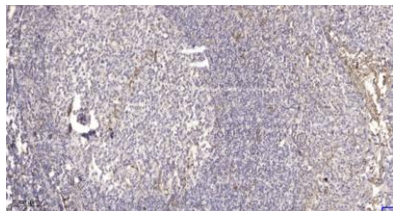


Western blot analysis of the lysates from HT-29 cells using
THAP4 antibody.





ELK Biotechnology



Immunohistochemical analysis of paraffin-embedded human tonsil. 1, Antibody was diluted at 1:200(4° overnight). 2, Tris-EDTA,pH9.0 was used for antigen retrieval. 3,Secondary antibody was diluted at 1:200(room temperature, 45min).



+86-27-59760950

ELKbio@ELKbiotech.com

www.elkbiotech.com

23-2, No.388 Gaoxin 2nd Road,Wuhan East Lake Hi-tech Development Zone, Hubei , P.R.C