



# SLC43A1 rabbit pAb

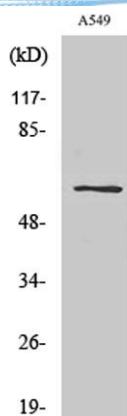
Cat No.:ES3452

For research use only

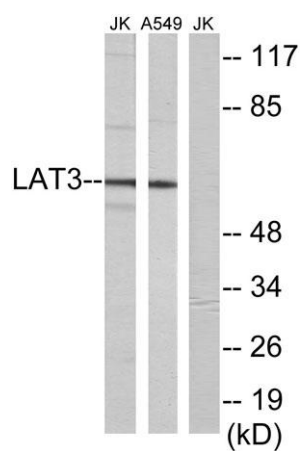
## Overview

<b>Product Name</b>	SLC43A1 rabbit pAb
<b>Host species</b>	Rabbit
<b>Applications</b>	WB;ELISA;IHC
<b>Species Cross-Reactivity</b>	Human;Rat;Mouse;
<b>Recommended dilutions</b>	WB 1:500-2000;IHC-p 1:50-300; ELISA 2000-20000
<b>Immunogen</b>	The antiserum was produced against synthesized peptide derived from human LAT3. AA range:231-280
<b>Specificity</b>	SLC43A1 Polyclonal Antibody detects endogenous levels of SLC43A1 protein.
<b>Formulation</b>	Liquid in PBS containing 50% glycerol, 0.5% BSA and 0.02% sodium azide.
<b>Storage</b>	Store at -20°C. Avoid repeated freeze-thaw cycles.
<b>Protein Name</b>	Large neutral amino acids transporter small subunit 3
<b>Gene Name</b>	SLC43A1
<b>Cellular localization</b>	Membrane ; Multi-pass membrane protein .
<b>Purification</b>	The antibody was affinity-purified from rabbit antiserum by affinity-chromatography using epitope-specific immunogen.
<b>Clonality</b>	Polyclonal
<b>Concentration</b>	1 mg/ml
<b>Observed band</b>	61kD
<b>Human Gene ID</b>	8501
<b>Human Swiss-Prot Number</b>	O75387
<b>Alternative Names</b>	SLC43A1; LAT3; PB39; POV1; Large neutral amino acids transporter small subunit 3; L-type amino acid transporter 3; Prostate cancer overexpressed gene 1 protein; Solute carrier family 43 member 1
<b>Background</b>	SLC43A1 belongs to the system L family of plasma membrane carrier proteins that transports large neutral amino acids (Babu et al., 2003 [PubMed 12930836]).[supplied by OMIM, Mar 2008],

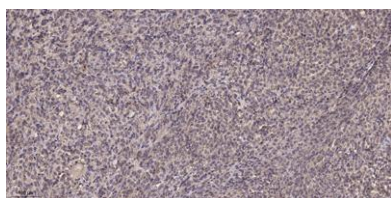




Western Blot analysis of various cells using SLC43A1 Polyclonal Antibody



Western blot analysis of lysates from A549 and Jurkat cells, using LAT3 Antibody. The lane on the right is blocked with the synthesized peptide.



Immunohistochemical analysis of paraffin-embedded human Colon cancer. 1, Antibody was diluted at 1:200(4° overnight). 2, Tris-EDTA,pH9.0 was used for antigen retrieval. 3,Secondary antibody was diluted at 1:200(room temperature, 45min).

